



HOTEL  
MARSHFIELD

UNEXPECTED.  
MEMORABLE. LOCAL.



Hotel Marshfield is Marshfield, Wisconsin's first independent, locally-owned hotel. We're driven to deliver an unexpected, memorable and authentically local experience. Fresh off a \$8.5 million renovation, we now stand ready to welcome guests traveling to Central Wisconsin for work, leisure, medical care at the acclaimed Marshfield Clinic, sports tournaments, and special events of all sorts.

### ACCOMMODATIONS

- ✦ 99 extensively renovated and surprisingly spacious guest rooms and suites with comfortable furnishings and new fixtures
- ✦ King or Queen size beds with luxury linens
- ✦ Extended stay suites with full kitchens, oversized closets and extra amenities for those staying with us a while longer
- ✦ 42" LCD HD televisions
- ✦ Free high-speed wireless Internet
- ✦ In-room refrigerator and Keurig coffee makers
- ✦ Work desk with ergonomic chair
- ✦ Snack baskets featuring local products
- ✦ Custom artwork
- ✦ Pet-friendly, with special packages catering to those traveling with pets
- ✦ Handicap accessible guest rooms

### HOTEL FEATURES & GUEST SERVICES

- ✦ Full-service, two-story hotel
- ✦ Northwoods Backyard, an outdoor courtyard featuring lounge seating, fire pit with seating for 25, seasonal outdoor pool and year-round outdoor sauna, whirlpool, cool-down pool
- ✦ Libby McNeill's Food + Drink serving breakfast, lunch, dinner with lounge seating, room service, and seasonal outdoor bar and reception area
- ✦ Complimentary hot breakfast buffet in Libby McNeill's for hotel guests
- ✦ State-of-the-art fitness center equipped with cardiovascular equipment and free weights
- ✦ Business Center including a work station, printer, and copy and fax services
- ✦ Expansive event space for small to large meetings and weddings
- ✦ Complimentary outdoor parking
- ✦ Market Place serving sundries and local products
- ✦ Complimentary shuttle to Marshfield Clinic, Marshfield airport and other local businesses
- ✦ Travel Green certification- sponsored by Wisconsin Department of Tourism. Recognizing our eco-friendly travel practices, design elements, recycling and conservation programs.



HOTEL  
MARSHFIELD

LIBBY McNEILL'S  
FOOD + DRINK



### COMFORT FOOD WITH A TWIST

Food is our focus, classic cocktails are our specialty, and serving up a welcoming atmosphere is our priority. Specializing in American pub fare, Libby McNeill's Food + Drink takes Midwest comfort food to the next level with an imaginative menu that includes locally sourced ingredients. We're designed to deliver a genuine Marshfield experience.

With our inviting, lounge-like atmosphere, Libby McNeill's is Marshfield's newest gathering place for locals and guests alike.

### THE STORY OF LIBBY MCNEILL'S

The concept for Libby McNeill's originated from the former Libby, McNeill & Libby pickling plant. Dating back over 100 years ago, the Chicago-based company expanded with building plants around the Midwest, including one built in Marshfield in 1905. The company was a staple in the community for over 20 years and although the factory is long gone, the rich history of Libby, McNeill & Libby is still present in the Marshfield community. Our cuisine gives a creative nod to the pickling plant's famous history.

### DESIGN AND DÉCOR

- ✦ Main floor dining including lobby lounge
- ✦ Comfortable lounge seating surrounded by a three-sided fireplace
- ✦ Granite-topped bar
- ✦ High-back booth seating
- ✦ High-top and table-top seating

- ✦ Large LCD HD flat screen television to watch the morning news or the big game
- ✦ Gathering areas with large communal table, soft seating, and private televisions
- ✦ Northwoods Backyard with outdoor patio seating for 25 complete with an inviting fire pit

### THE DRINKS

- ✦ Well-trained staff shaking and serving your favorite classic cocktails
- ✦ Featuring Wisconsin beer from local craft breweries

### THE FOOD

- ✦ Join us every day- serving breakfast, lunch and dinner
- ✦ Regionally-inspired menu
- ✦ From scratch preparation and cooking
- ✦ Weekly specials including Friday Fish Fry and Saturday Night Prime Rib
- ✦ Special events and promotions
- ✦ Private dining, banquets and catering options for 10-700



### THE PLACE WHERE WISCONSIN MEETS

Hotel Marshfield offers an inspiring environment for all your meeting and event needs. We provide over 8,250 square feet of flexible meeting, dining and event space for 10 to 700 guests.

Our modern and functional event space is comprised of two beautiful ballrooms, an executive boardroom, private dining and an outdoor patio. We offer a creative and customizable catering menu.

We're here for you. Whether it's your annual corporate meeting, state association event, trade show, or hosting a cocktail party with friends, our staff will provide exceptional service to make your meeting or special event memorable.

### FEATURES:

- ✦ Modern independent hotel
- ✦ New, spacious meeting and event space including two ballrooms
- ✦ Pre-function space for registration, exhibits, or private bar and reception area
- ✦ Accommodating 10 to 700 guests
- ✦ Customizable banquet menus featuring locally sourced products
- ✦ State-of-the-art audio & visual equipment
- ✦ Entirely high-speed wireless hotel
- ✦ Business services including computer access, printing and ample free parking for all guests
- ✦ Northwoods Backyard outdoor reception area

### THE GRAND & CENTRAL BALLROOMS

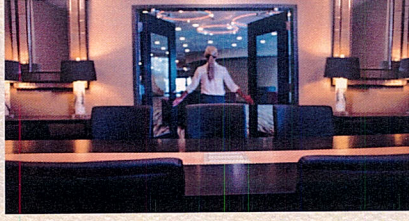
- ✦ Two large ballrooms that are divisible into three rooms for breakouts and smaller events
- ✦ Flexible space that divides for meetings for 45-70 people each
- ✦ Accommodates up to 300 at round tables for banquet seating and 700 when combining both rooms for a reception
- ✦ Pre-function spaces located outside each ballroom
- ✦ Ideal event space for larger gatherings or conferences
- ✦ Options for unique outdoor receptions
- ✦ Easy move in/out for tradeshow – on lobby level with separate entrance
- ✦ State-of-the-art audio & visual equipment

### THE EXECUTIVE BOARDROOM AND THE MARSHFIELD PRIVATE DINING ROOM

- ✦ Each serves 12-24 guests privately
- ✦ The Executive Boardroom is an impressive boardroom that seats 12 guests in a conference setting
- ✦ Marshfield Room, a private dining room ideal for corporate meetings or special occasions
- ✦ State-of-the-art audio & visual equipment

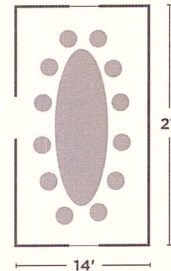
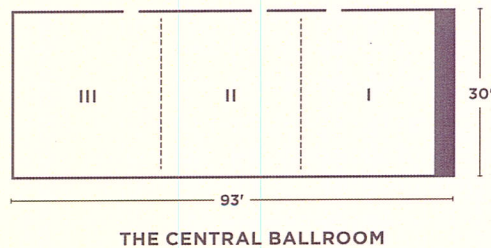
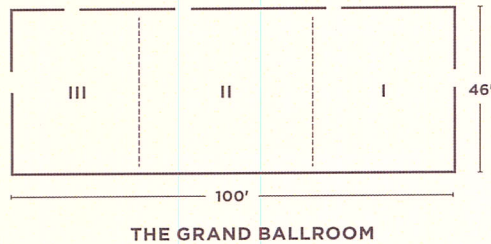
### PRE-FUNCTION/RECEPTION SPACES INCLUDING OUTDOOR RECEPTIONS

- ✦ Pre-function area ideal for guests to socialize before a banquet, party or conference
- ✦ Indoor and outdoor pre-function reception area providing over 2,000 square feet of additional space
- ✦ Marshfield's only outdoor meeting and reception space
- ✦ Large windows overlooking the new Northwoods Backyard outdoor courtyard
- ✦ New lighting, carpeting, soft seating, and custom artwork throughout



Room Name	Room Dimensions	Square Feet	Ceiling Height	Banquet Rounds*	Theater Seating	Classroom Seating**	Boardroom Seating
<b>The Grand Ballroom</b>	46' x 100'	4,600	9' 11"	325	325	325	n/a
<b>Ballroom I</b>	46' x 34'	1,564	9' 11"	105	105	105	n/a
<b>Ballroom II</b>	46' x 36'	1,656	9' 11"	115	115	115	n/a
<b>Ballroom III</b>	46' x 30'	1,380	9' 11"	105	105	105	n/a
<b>The Central Ballroom</b>	30' x 93'	2,790	9'	200	200	200	n/a
<b>Ballroom I</b>	30' x 32'	960	9'	72	72	72	n/a
<b>Ballroom II</b>	30' x 26'	780	9'	48	48	48	n/a
<b>Ballroom III</b>	30' x 35'	1,050	9'	80	80	80	n/a
<b>The Executive Boardroom</b>	14' x 21'	294	9'	n/a	n/a	n/a	12
<b>The Marshfield Room</b>	15' x 23'	345	9'	6 tables of 4 for a total of 24 people			

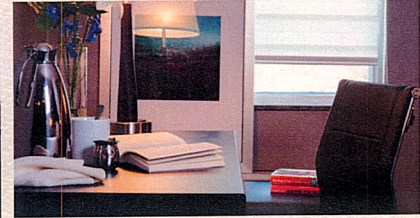
\* = Banquet 8 person tables, \*\* = Classroom 3 person tables





HOTEL  
MARSHFIELD

## STYLISH NEW ROOMS & AMENITIES



### **All rooms include:**

- ✦ Work desk with ergonomic desk chair
- ✦ Free high-speed internet
- ✦ Keurig coffee maker
- ✦ In-room refrigerator
- ✦ 42" LCD HD television
- ✦ Complimentary hot breakfast in Libby McNeill's

### **EXECUTIVE KING ROOM**

- ✦ Comfortable king-size bed
- ✦ Full sized sofa sleeper
- ✦ Luxury linens

### **EXECUTIVE TWO-QUEEN ROOM**

- ✦ Two comfortable queen-size beds
- ✦ Luxury linens

### **STUDIO SUITE**

- ✦ One large open room
- ✦ Living room area featuring a sofa sleeper
- ✦ Comfortable king-size bed
- ✦ Luxury linens

- ✦ Fully furnished kitchenette with under-counter refrigerator, sink, microwave, and dishwasher
- ✦ Bistro dining table for two
- ✦ 42" LCD HD television
- ✦ Oversized closet

### **DELUXE SUITE**

- ✦ Two-room suite ideal for a night, a weekend, or an extended stay
- ✦ Private bedroom with a comfortable king-size bed
- ✦ Luxury linens

- ✦ Fully furnished kitchenette with under-counter refrigerator, microwave, sink, and dishwasher
- ✦ Living room area featuring a sofa sleeper and a daybed
- ✦ Two 42" LCD HD televisions
- ✦ Oversized closet



**All rooms include:**

- ✦ Work desk with ergonomic desk chair
- ✦ Free high-speed internet
- ✦ Keurig coffee maker
- ✦ In-room refrigerator
- ✦ 42" LCD HD television
- ✦ Complimentary hot breakfast in Libby McNeill's

**PREMIER SUITE**

- ✦ Two-room suite comfortable for a night, a weekend, or an extended stay
- ✦ Private bedroom with either a king-size or two queen-size beds with luxury linens
- ✦ Fully furnished kitchenette with under-counter refrigerator, microwave, sink, and dishwasher
- ✦ Bistro dining table for two
- ✦ Living room area featuring a full-size sofa sleeper
- ✦ Two 42" LCD HD televisions
- ✦ Oversized closet

**GRAND SUITE**

- ✦ Three-room suite
- ✦ Two private bedrooms, one with a king-size bed and the other with two queen-sized beds
- ✦ Luxury linens
- ✦ Fully furnished kitchenette with under-counter refrigerator, microwave, sink, and dishwasher
- ✦ Comfortable living room area with a sofa sleeper
- ✦ Three 42" LCD HD televisions
- ✦ Oversized closets