



THE
INGLESIDE
HOTEL

MEETING & EVENTS GUIDE

LOCATION

- Just off Interstate 94 at Highway T in Pewaukee, WI
- 20 miles west of downtown Milwaukee
 - 50 miles east of Madison
 - 90 miles north of Chicago
 - Short drive to attractions such as Ten Chimneys, The Milwaukee County Zoo and Miller Park
 - Minutes away from Historic Downtown Delafield, WI
 - Unique shopping nearby including art galleries

AMENITIES

- Free Wireless Internet throughout the hotel
- Indoor Pool, separate from Water Park
- Complimentary local and toll-free telephone calls
- Fitness Center
- Bike Rental

ACCOMMODATIONS

194 guest rooms including:

- 2 Hospitality Suites
- Entire hotel is smoke free

CONVENTION SPACE

- More than 40,000 sq. feet of diversified banquet and meeting space
- Outdoor picnic and meeting facilities - Ingleside Pavilion
- Complimentary parking for cars and buses

DINING/LOUNGE

- Didi's Supper Club
- Square Meal Snack Bar in Springs Water Park
- Wet Your Whistle Lounge in Springs Water Park

RECREATION

- 1.5 mile, wooded jogging/walking trail
- 8.2 mile bike trail
- Adjacent to Pewaukee Golf Club and additional courses minutes away
- Adjacent to Westwood Health and Fitness Club

SPRINGS WATER PARK

- Over 45,000 sq. feet of water park adventures
- Interactive arcade
- Snack bar & lounge
- Open to the public
- Day passes available for purchase, based on availability



MEETING ROOM SUMMARY

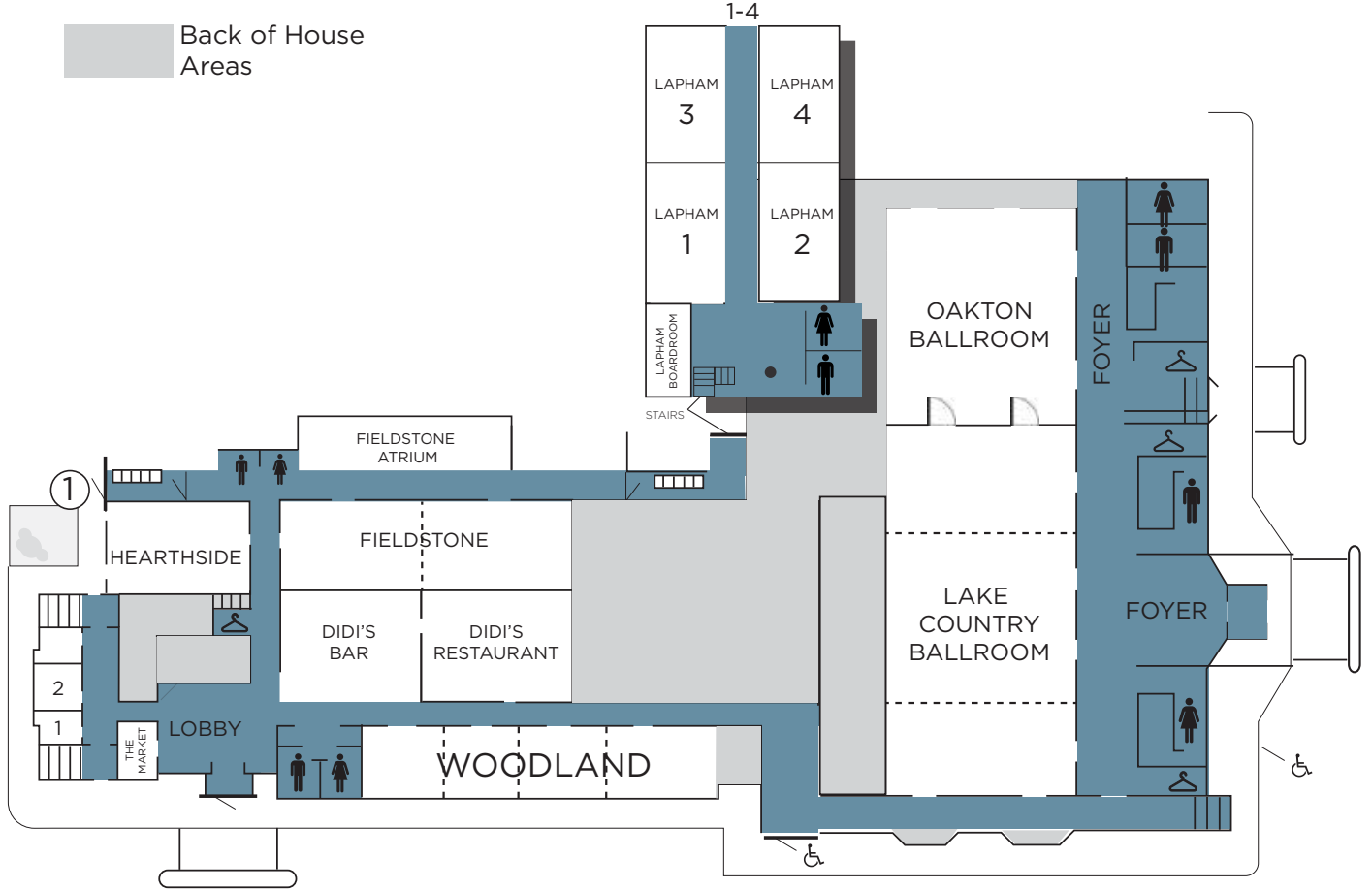
	CONFERENCE	"U" SHAPE	HOLLOW CONFERENCE	CLASSROOM	CRESCENTS	BANQUET ROUNDS	THEATRE	RECEPTION	TABLE TOPS (8'x3')	TABLE TOPS (6'x30")	8'x10' BOOTHS		SQUARE FOOTAGE	CEILING HEIGHT											
LOCATION	CAPACITIES*																								
LAPHAM MEETING ROOMS:																									
Suite 1 & Suite 2	NA	NA	20	20	24	24	36	36	NA	NA	NA	NA	NA	NA	37'X28'	1036'	8'								
Suite 3 & Suite 4	NA	NA	20	24	36	NA	NA	NA	NA	NA	NA	NA	NA	NA	37'X28'	1036''	8''								
LAPHAM BOARDROOM	10	10	NA	NA	NA	NA	NA	NA	NA	NA	NA	NA	NA	NA	16'X18'	288'	8'								
BANQUET/ MEETING ROOMS:																									
HEARTHSTONE	32	32	39	39	48	48	60	60	48	80	80	112	112	150	150	12	12	14	14	8	8	36'X42'	1512'	13'	
FIELDSTONE	NA	NA	NA	NA	NA	NA	134	134	102	170	170	254	254	260	260	29	29	35	35	14	14	32'X82'	2624'	10'	
Fieldstone East	32	33	42	42	60	60	48	80	80	144	144	130	130	NA	NA	NA	NA	18	18	NA	NA	32'X41'	1312'	10'	
Fieldstone West	32	32	33	33	42	42	60	60	48	80	80	144	144	130	130	NA	NA	18	18	NA	NA	32'X41'	1312'	10'	
FIELDSTONE ATRIUM	NA	NA	NA	NA	NA	NA	NA	NA	36	36	NA	NA	70	70	NA	NA	NA	NA	NA	NA	NA	NA	15'X48'	720'	8'-13'
WOODLAND	NA	NA	NA	NA	NA	NA	150	150	105	168	168*	270	270	320	320	22	22	31	31	15	15	29'X108'	3132'	13'	
Woodland A, B or C	23	23	21	24	33	33	25	40	40	54	54	70	70	NA	NA	NA	NA	8	8	NA	NA	29'X24'	696'	13'	
Woodland D	30	30	28	28	36	36	60	60	45	72	72	84	84	100	100	NA	NA	13	13	NA	NA	29'X36'	1044'	13'	
Woodland AB	32	32	40	40	48	48	66	66	50	80	80	108	108	140	140	NA	NA	22	22	NA	NA	29'X48'	1392'	13'	
Woodland CD	40	40	54	54	58	58	90	90	70	112	112	138	138	170	170	NA	NA	28	28	NA	NA	29'X60'	1740'	13'	
BALLROOMS:																									
LAKE COUNTRY BALLROOM	NA	NA	NA	NA	NA	NA	468	468	324	540	540	720	720	720	720	68	68	NA	NA	42	42	60'X120'	7200'	12'-16'	
Lake Country Ballroom Foyer	NA	NA	NA	NA	NA	NA	NA	NA	NA	NA	NA	NA	NA	320	320	12	12	NA	NA	10	10	NA	3200'	12'	
1/3 Lake Country Ballroom	NA	NA	54	54	NA	NA	144	144	108	180	180	240	240	240	240	26	26	NA	NA	NA	NA	60'X40'	2400'	12'-16'	
1/2 Lake Country Ballroom	NA	NA	NA	NA	NA	NA	216	216	162	270	270	360	360	360	360	34	34	NA	NA	21	21	60'X60'	3600'	12'-16'	
2/3 Lake Country Ballroom	NA	NA	NA	NA	NA	NA	288	288	216	360	360	480	480	480	480	50	50	NA	NA	32	32	60'X80'	4800'	12'-16'	
OAKTON BALLROOM	NA	NA	NA	NA	NA	NA	288	288	216	360	360	480	480	480	480	50	50	NA	NA	32	32	60'X80'	4800'	12'-16'	
Oakton Ballroom Foyer	NA	NA	NA	NA	NA	NA	NA	NA	NA	NA	NA	NA	NA	250	250	12	12	NA	NA	8	8	NA	2500'	12'	
INGLESIDE VILLAGE:																									
INGLESIDE PAVILION	NA	NA	NA	NA	NA	NA	120	120	90	150	150	200	200	200	200	20	20	NA	NA	NA	NA	40'X60'	2400'	9'6''	
INGLESIDE GAZEBO	NA	NA	NA	NA	NA	NA	NA	NA	NA	200	200	NA	NA	NA	NA	NA	NA	NA	NA	NA	NA	NA	NA	NA	NA
VILLAGE PARK	2.5 ACRE 25 ACRES OF VERSITILE OUTDOOR SPACE WITH A BANDSHELL											NA	NA	NA											

Capacities do not take into consideration audio visual requirements.

* 8 People Per Table

- Hallways/
Common Areas
- Back of House
Areas

SECOND FLOOR EAST:
LAPHAM





IF YOU'RE HUNTING FOR A PLACE TO GATHER, YOU'VE FOUND IT.

Corporate meeting or association conference; whatever the size, substance or style, memorable gatherings are our specialty. Business events can be something special when there are trails for hiking and wide-open spaces for team building right outside your door. Why choose an ordinary venue for your business event or conference when extraordinary is just 20 miles from Milwaukee?

LAKE COUNTRY BALLROOM



With over 7,200 square feet of space, the multifunctional Lake Country Ballroom can be divided to accommodate your needs. With our state-of-the-art audio visual and lighting systems, you can create the perfect ambiance for any function. From continental breakfasts to cocktail receptions, the spacious foyer with its built-in bar area and private restrooms, will surely surpass your expectations.

- Total Square Footage: 7,200 (60' x 120')
- Ceiling Height: 12' 16"
- Audio Visual: Motorized concealed screens
- Power: 110v/20amp circuit
- Features: 1,000 - car surface lot, free parking

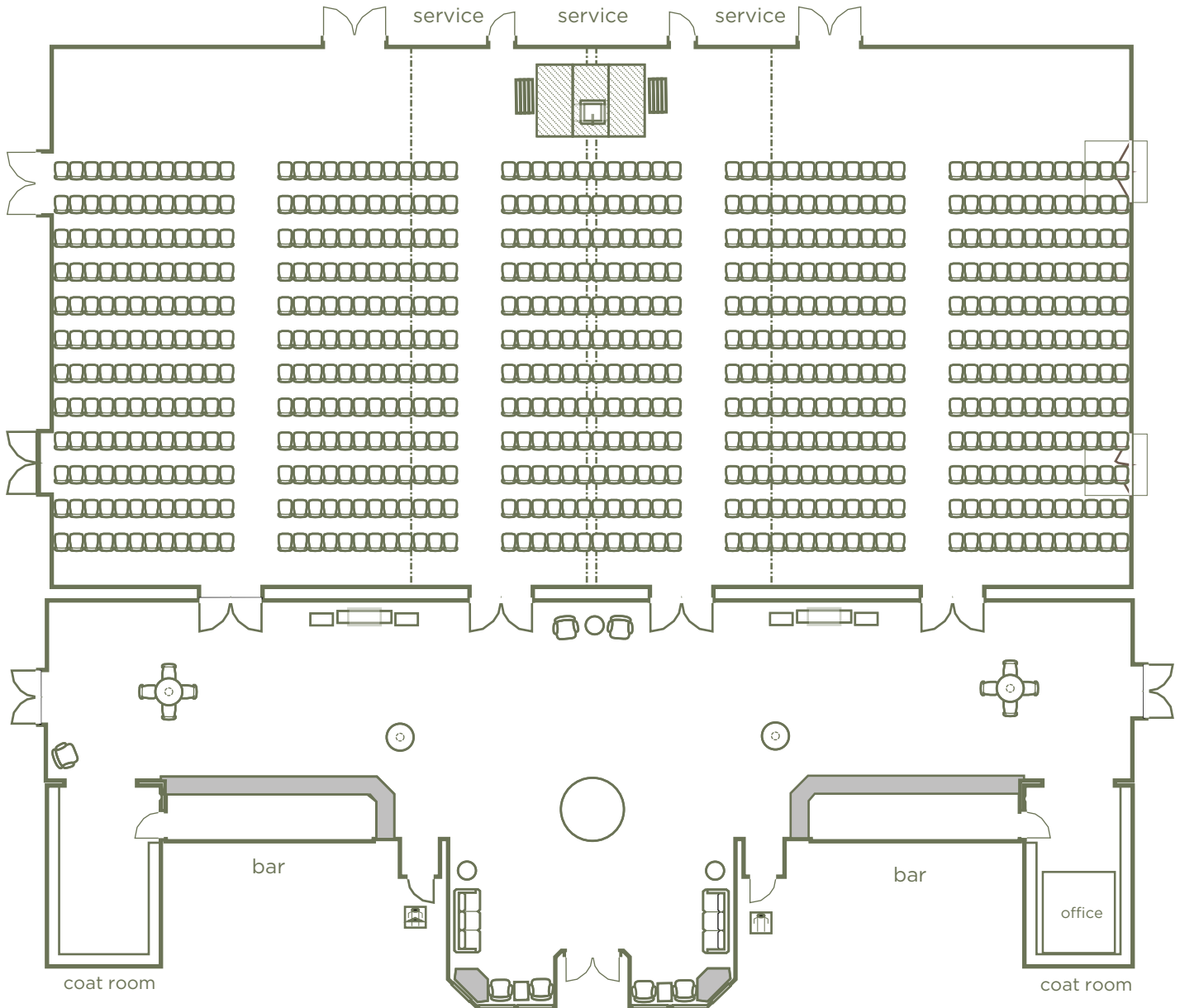


Lake Country Ballroom & Foyer

Lake Country Ballroom South

Lake Country Ballroom Center

Lake Country Ballroom North



OAKTON BALLROOM

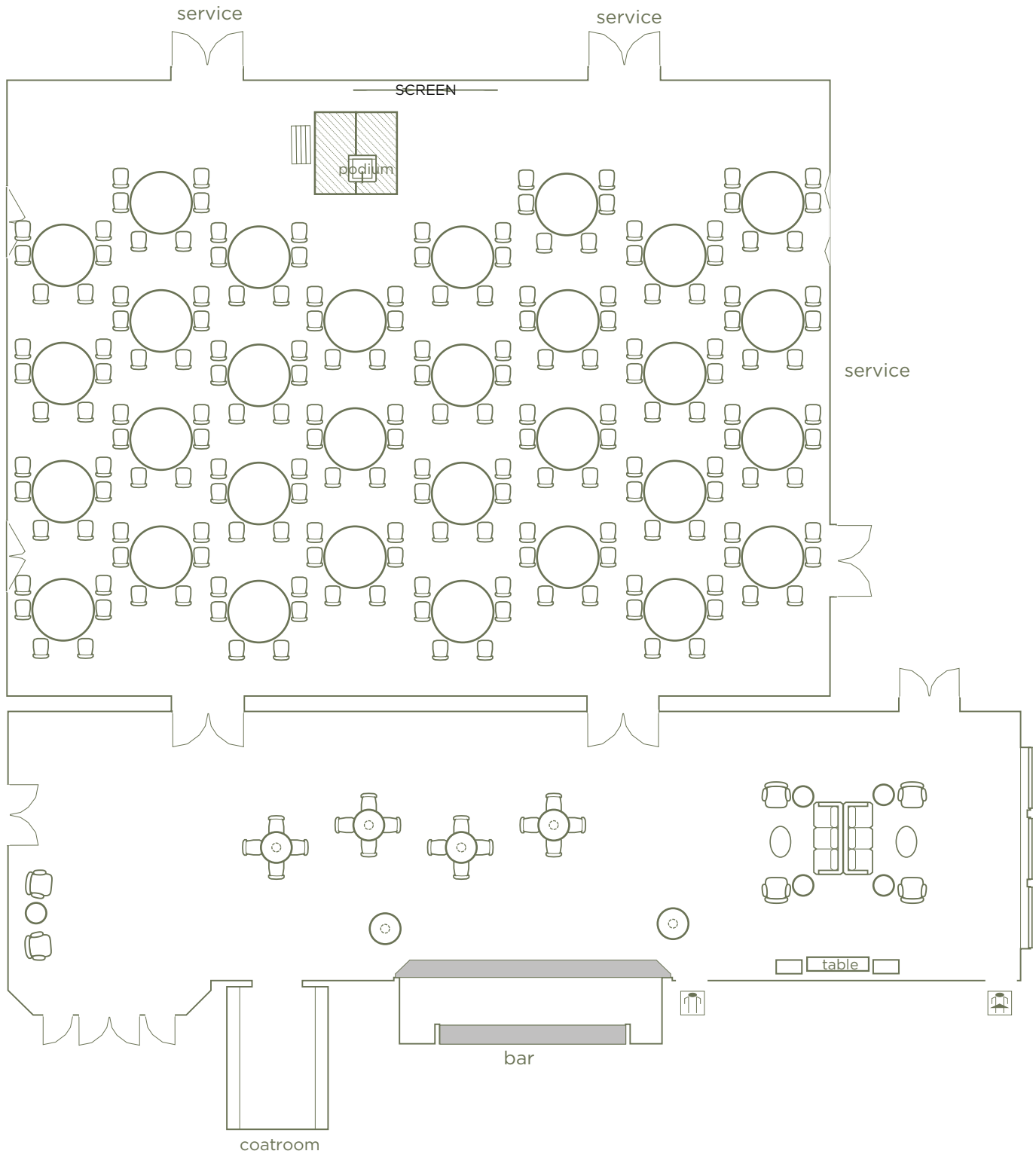


Located adjacent to the Lake Country Ballroom, the Oakton Ballroom offers 4,800 square feet of flexible meeting and banquet space. Featuring an outdoor entrance and separate built-in bar and restrooms, the Oakton Ballroom is a distinct destination all its own, yet it can serve as the perfect complement to any Lake Country Ballroom event.



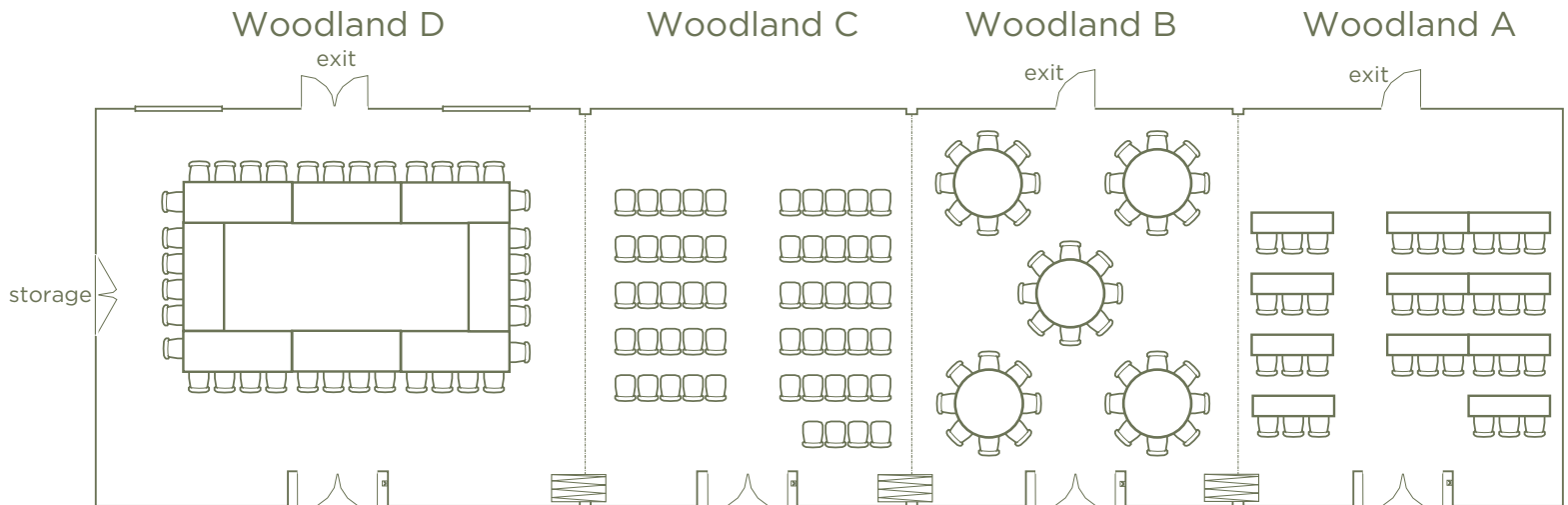
- Total Square Footage: 4,800 (60' x 80')
- Ceiling Height: 12' 16"
- Audio Visual: Motorized concealed screen
- Power: 110v/20amp circuit
- Features: 1,000 - car surface lot, free parking
- 10' x 16' Freight Door

Oakton Ballroom & Foyer



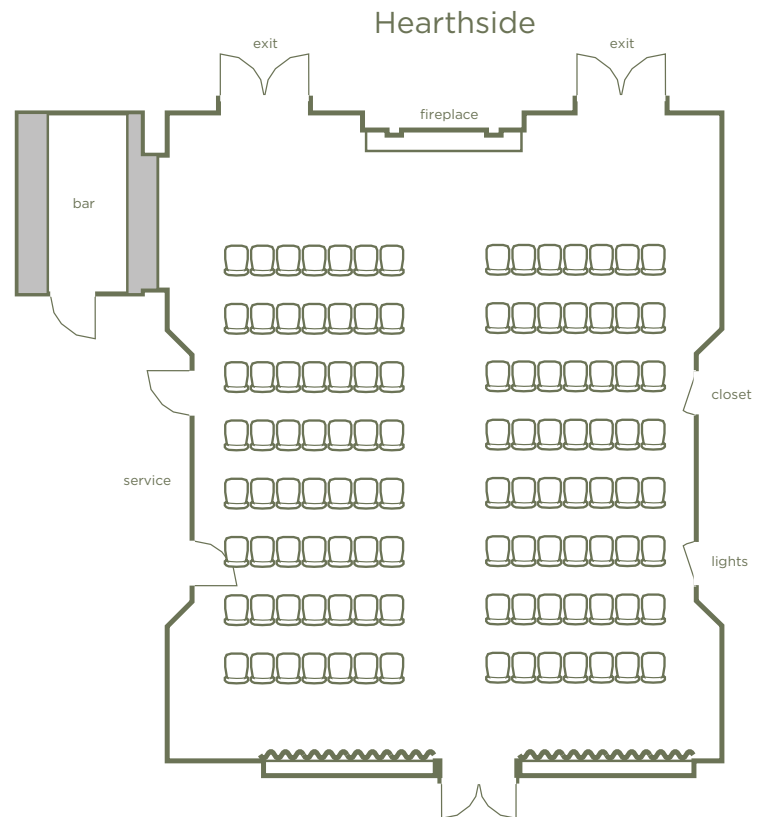
WOODLAND

The Woodland Room is a favorite because of flexibility and convenience. With four divisible sections, an endless variety of options are possible, from intimate to spacious. With its ideal central location adjacent to the lobby and Didi's Supper Club, it's the perfect complement to any agenda.



HEARTHSTONE

The Hearthside Room defines versatility. Large doors allow natural light to filter in, and exit to a patio area. Back-lit bookshelves, a gas fireplace and an elegant chandelier, adds to the warm setting this room offers.



LAPHAM BOARDROOMS

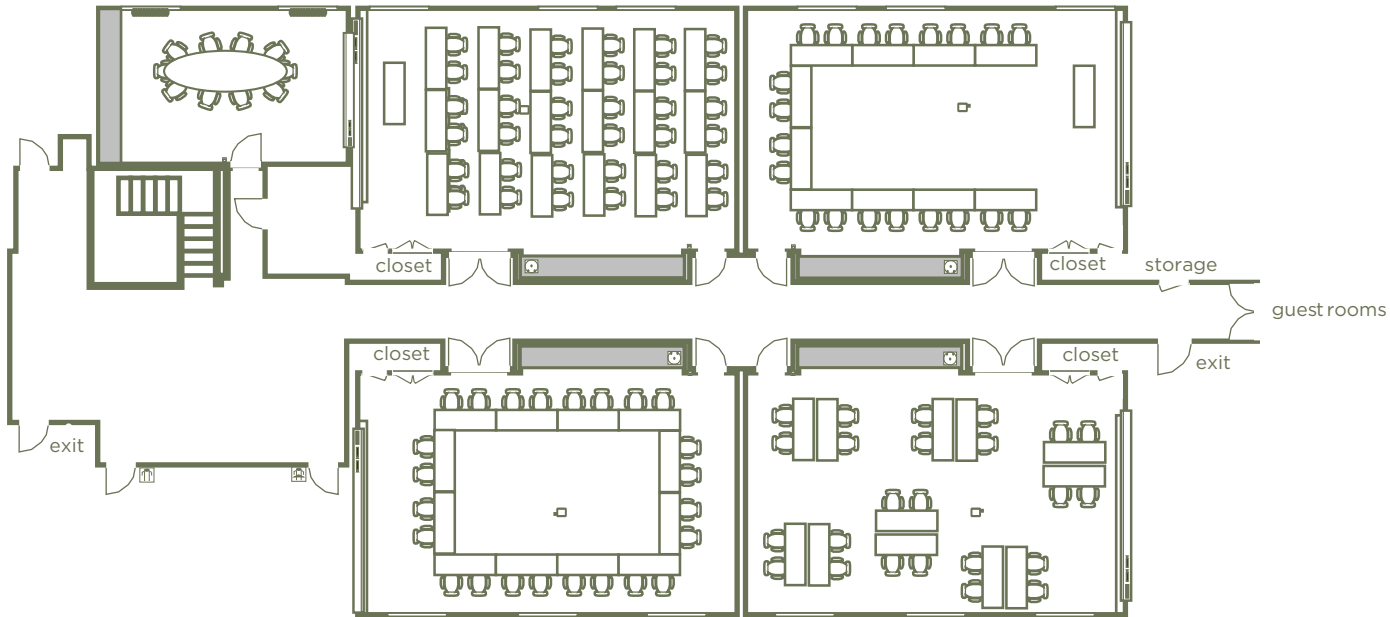


Lapham rooms include four separate Learning Suites, a Boardroom, and a versatile pre-function area. Individual climate control, audio visual equipment, wall mounted whiteboards, ergonomic seating and hard surface workstations provide the perfect setting for productive meetings.

Lapham Boardroom

Lapham 1

Lapham 3



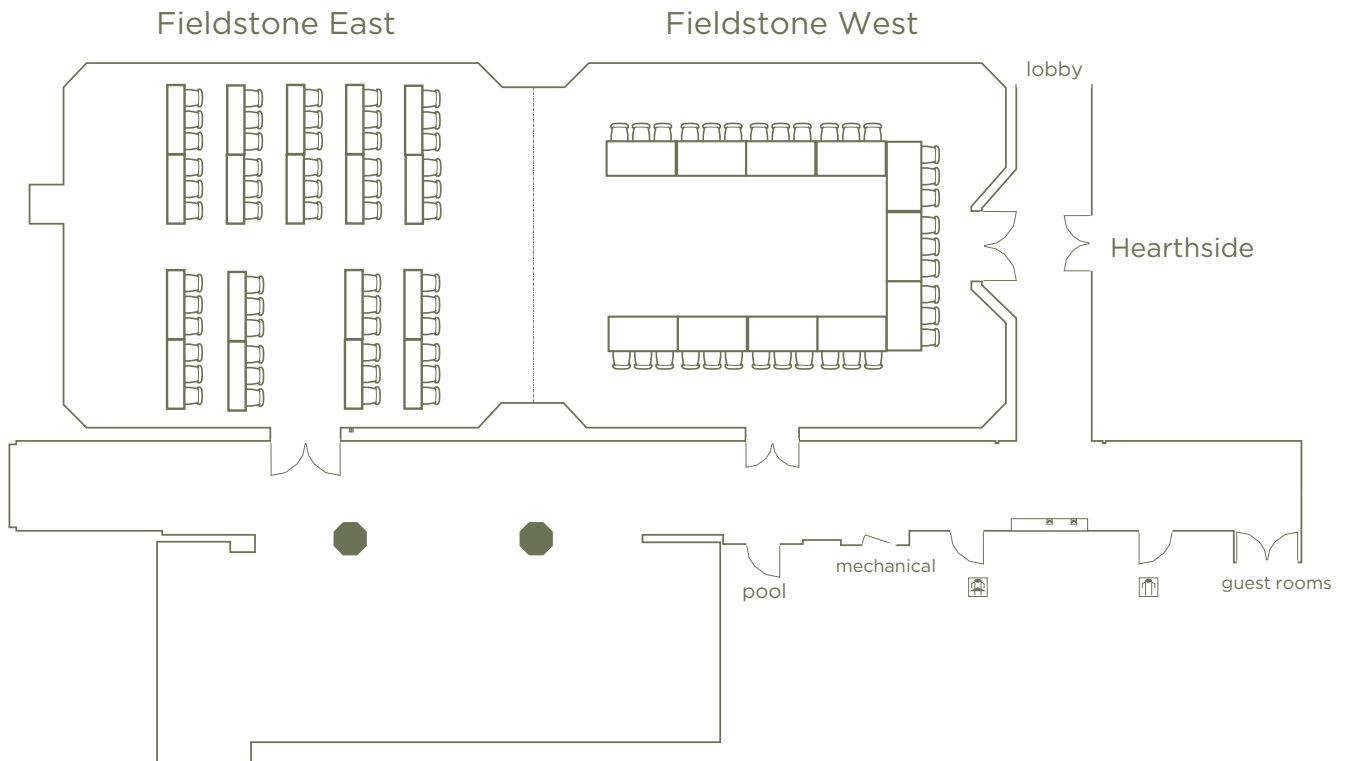
Lapham 2

Lapham 4

FIELDSTONE/ FIELDSTONE ATRIUM



The Fieldstone Room has dimensions that allow for flexibility in room set up for the best possible sight lines. Centrally located amongst the other meeting facilities, Fieldstone can be divided into two equal parts. It is adjacent to the Fieldstone Atrium which is the perfect site for your refreshment breaks.



INGLESIDE PAVILION & PARK PAVILION



Food and beverage service, a sound system and private restrooms make Ingleside Pavilion a popular indoor/outdoor venue for events ranging from luncheons to evening barbecues. This space includes a wrap-around patio area that overlooks the covered band shell.

GAZEBO & INGLESIDE PARK



Ingleside Pavilion is adjacent to Village Park, boasting multiple acres of green space for mini carnivals, outdoor rides and team building events. Ingleside Gazebo offers charm and elegance while providing ample space for attendees and guests.

HOSPITALITY SUITES

HOSPITALITY SUITES



Top-level amenities and superior service surround you and your guests in our newly designed hospitality suites. The comfortable setting offers a conference table for six and space that can accommodate up to 20 people.

Hospitality Suites are perfect for strategic planning, staff headquarters, and small group gatherings. Amenities include a large sitting area with a TV, wet bar for VIP entertaining, and a private bathroom.

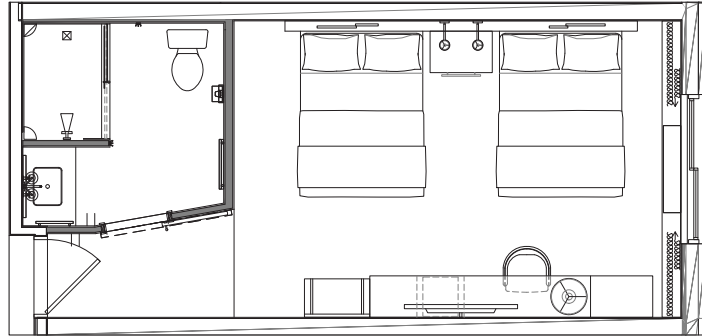


WE'RE FROM THIS COMMUNITY AND IT SHOWS.

For more than 20 years, this hotel has been an important part of the community, and has taken pleasure in caring for its guests. Today many long-time staff members proudly carry on these traditions. If you see a familiar face, it's because many of us have been here for many years. This is our home, away from home, and we treat it that way.

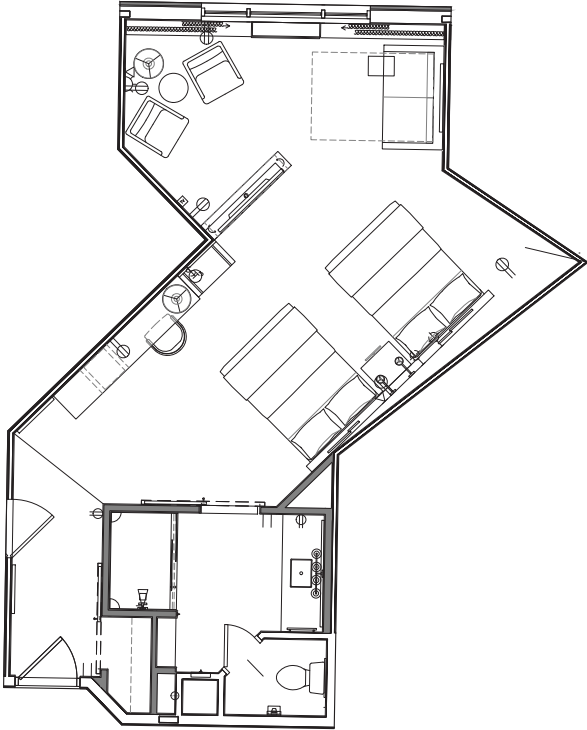
PREMIER GUEST ROOMS

- 147 Premier Guest Rooms
- Two queen beds or one king bed
- Spacious bathroom with tile and glass accents
- Work station with data port
- 43" flat screen TV
- LodgeNet Digital Interactive TV System
- Refrigerator and coffee maker
- Iron and ironing board
- Bath and Body Works toiletries
- Hair dryer
- Simmons mattresses
- Complimentary local calls
- Approximately 315 sq. ft.



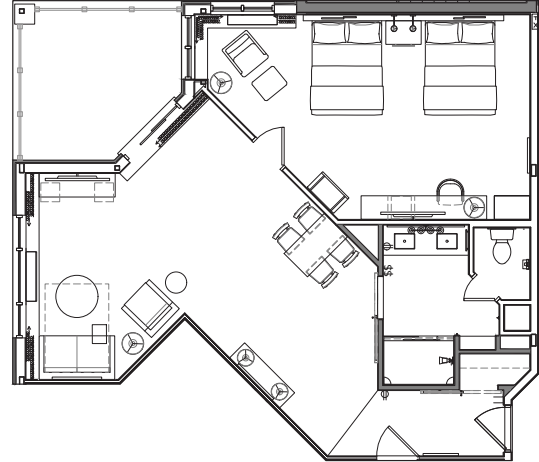
EXECUTIVE SUITES

- 32 Executive Suites
- Two queen beds or one king bed
- Full size sofa sleeper
- One room suite with sleeping and sitting area
- Spacious bathroom with tile and glass accents
- Work station with data port
- Large picture window with golf course view
- 50" flat screen TV
- LodgeNet Digital Interactive TV System
- Microwave, refrigerator and coffee maker
- Iron and ironing board
- Bath and Body Works toiletries
- Hair dryer
- Simmons mattresses
- Complimentary local calls
- Approximately 570 sq. ft.

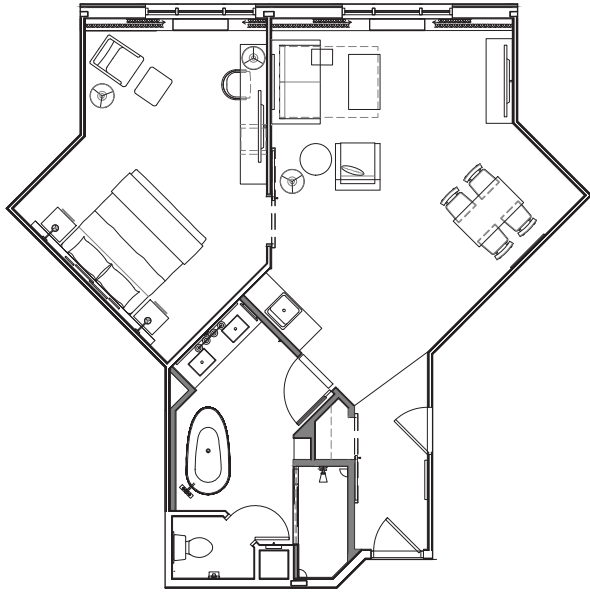


GOVERNORS SUITES

- 8 Governors Suites
- Two queen beds or one king bed
- Full size sofa sleeper
- Two room suite with separate bedroom and living area
- Dining table which seats four
- Balcony
- Spacious bathroom with tile and glass accents
- Two 50" flat screen TVs
- LodgeNet Digital Interactive TV System
- Microwave, refrigerator and coffee maker
- Iron and ironing board
- Bath and Body Works toiletries
- Hair dryer
- Simmons mattresses
- Complimentary local calls
- Approximately 860 sq. ft.

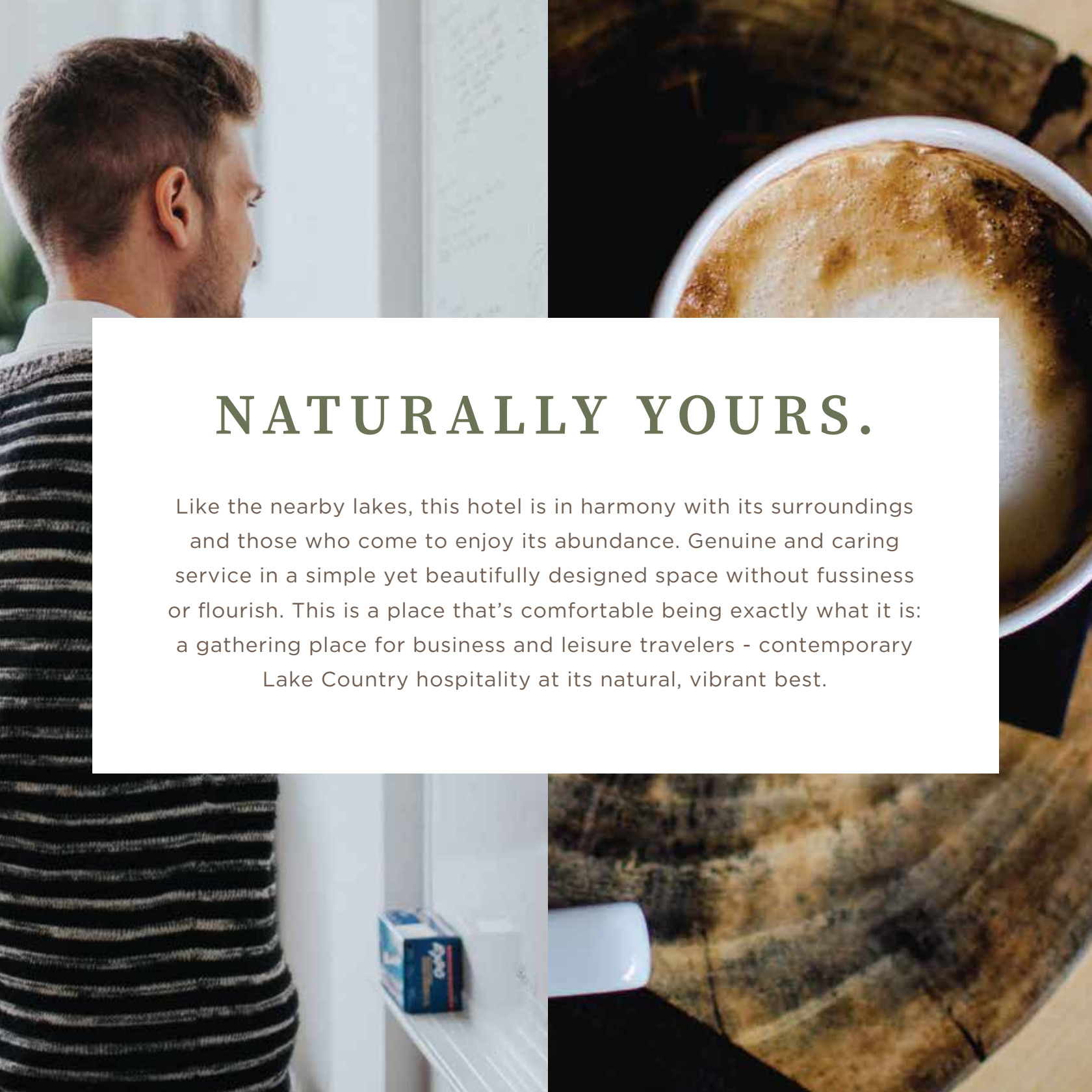


PRESIDENTIAL SUITES



- 4 Presidential Suites
- One king bed
- Full size sofa sleeper
- Two room suite with separate bedroom and living area
- Dining table which seats four
- Spacious bathroom with Rain Shower and Large Soaking Tub
- Two 50" flat screen TVs
- LodgeNet Digital Interactive TV System
- Microwave, refrigerator and coffee maker
- Iron and ironing board
- Bath and Body Works toiletries
- Hair dryer
- Simmons mattresses
- Complimentary local calls
- Approximately 815 sq. ft.





NATURALLY YOURS.

Like the nearby lakes, this hotel is in harmony with its surroundings and those who come to enjoy its abundance. Genuine and caring service in a simple yet beautifully designed space without fussiness or flourish. This is a place that's comfortable being exactly what it is: a gathering place for business and leisure travelers - contemporary Lake Country hospitality at its natural, vibrant best.



Didi's
SUPPER CLUB

Didi's Supper Club and bar offers an amazing selection of craft cocktails, beers and pub style food. Didi's Supper Club offers a classic supper club menu featuring fresh Wisconsin ingredients. You will find a nice selection of steaks, chops, pasta and our popular Friday Fish Fry!





The Ingleside Hotel offers numerous amenities such as an indoor pool, newly renovated fitness center, Geysers Games Arcade and Springs Water Park. In addition to onsite options, there are numerous off-site recreation options located adjacent to the property including a golf course, spa, and wooded walking/bike trails.





2810 Golf Road | Pewaukee, WI 53072

262.547.0201 | 800.247.6640

theinglesidehotel.com

