

144 Beautiful Rooms SITUATED IN THE VIVACIOUS & LIVELY COMMUNITY of *Madison*

HOTEL INDIGO[®] MADISON

Perfectly situated just a couple of blocks from the hustle and bustle of Capitol Square, Hotel Indigo Madison Downtown boasts 144 beautifully designed rooms that really capture the essence of the neighborhood in Downtown Madison's East Washington Avenue.

Whether you are in Madison on business, want to experience the energy of events at Breese Stevens Field or wind down in one of Madison's popular areas such as State Street Shopping, the hotel is ideally suited for all types of travelers looking to explore the local neighborhood.

ACCOMMODATIONS

- 144 total rooms and suites
 - 92 stylish rooms
 - 48 spacious suites
 - 4 luxurious executive suites

AMENITIES

- Palette Bar and Grill with outdoor patio
- 24-hour fitness center
- Free WiFi
- Room Service
- Local Shuttle Service

DINING

Palette Bar and Grill features breakfast and dinner offering infused American cuisine with a focus on steaks and seafood, their bar also features a full custom cocktail program.

EVENTS

1,000 sq. ft. meeting and event space



901 E Washington Ave, Madison WI 53703 | 608.256.0061 | hotelindigomadison.com

HOTEL INDIGO[®]

MADISON

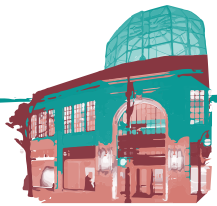
Built within the historic Mautz Paint Co. building, Hotel Indigo Madison Downtown is designed to reflect the hard-working history of the East Wash corridor and the colorful characters who helped shape Madison into what it is today. Our hotel features modern amenities and nostalgic touches, including the original Mautz Paint sign hanging at the front desk and creative artwork, such as our Madison influencer murals depicting Georgia O'Keeffe, Vel Phillips, Frank Lloyd Wright and more.

From the moment a guest arrives, they'll know this isn't a standard, everyday hotel, but one that truly embraces the colorful and industrial roots of the neighborhood and all there is to see, hear and taste in the area. Come. Check-in To Our Neighborhood.

Lake Mendota



MEMORIAL UNION



OVERTURE CENTER FOR THE ARTS



STATE STREET



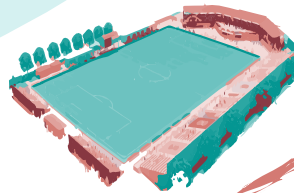
CAPITOL SQUARE



JAMES MADISON PARK



MADISON CHILDREN'S MUSEUM



BREESE STEVENS FIELD



THE SYLVEE



HOTEL INDIGO

East Wash

West Wash



BIKE PATH



MONONA TERRACE

Lake Monona