



University of Wisconsin – Milwaukee Master Plan Update

Board of Regents

May 7th, 2009

Schedule

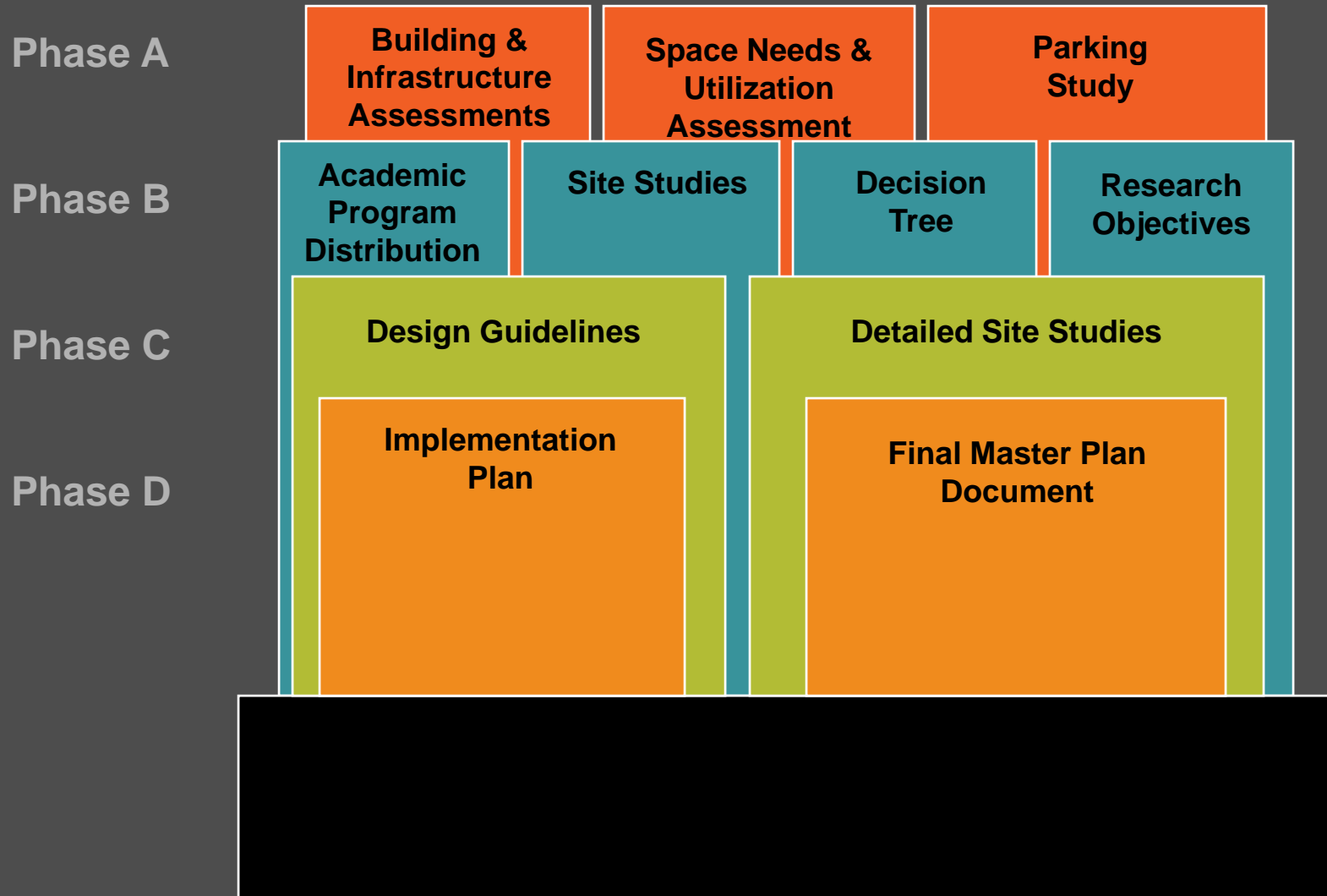
2008

2009

APR	MAY	JUN	JUL	AUG	SEP	OCT	NOV	DEC	JAN	FEB	MAR	APR	MAY	JUN	JUL	AUG	SEP	OCT	NOV	DEC
PHASE A - Observations & Assessment																				
①	②				③															
					PHASE B - Vision															
					④	⑤				⑥										
									PHASE C - Design Studies											
										⑦	⑧									
												PHASE D - Implementation								
																	⑨			⑩

① Work Sessions

Master Plan Tool Kit



Engagement

CORE TEAM

COMMITTEES

CAMPUS

COMMUNITY

- Monthly meetings with consultants

- Work sessions and presentations
- Regularly scheduled committee meetings

- Campus presentations
- Met with all departments and schools/colleges
- Feedback sessions, presentations to various groups (Faculty & Student orgs, classes, etc)
- UWM updates to various constituent orgs – Faculty Senate, APBC, etc.

- Campus presentations
- Visits to community groups & organizations
- Feedback sessions
- Partners have also been engaged in meetings and solicited feedback

Guiding Principles

Open

Responsive

Rigorous

Bold



Guiding Principles

Learning & Discovery

Access & Campus Life

Research Growth & Partnerships

Location & Connectivity

Stewardship

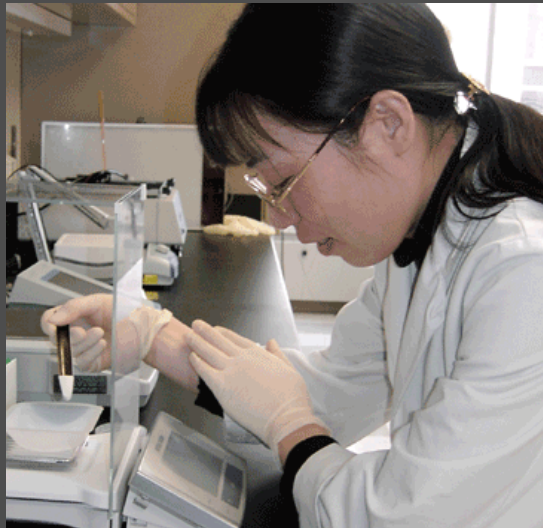


The Master Plan Vision

- **Key Drivers**
- **Opportunity Sites**
- **Academic Planning**
- **Research Clusters**
- **Sustainability**
- **Campus Life**
- **Transportation**
- **Kenwood Campus Design**

Key Drivers for the Master Plan

1. The UWM Mission
2. The Academic Plan
3. Research Areas and Partnerships
4. Campus Life



Guidelines to Govern Future Space Distribution

1. Kenwood as gateway for undergraduate education
2. Improve campus life at Kenwood and the East Side
3. Establish relevancy – locate programs throughout the city to respond to regional needs
4. Expand partnership opportunities
5. Enhance connectivity between all UWM sites

UWM VISION: Opportunity Sites

Kenwood

Undergraduate academics and student life

Harbor Campus

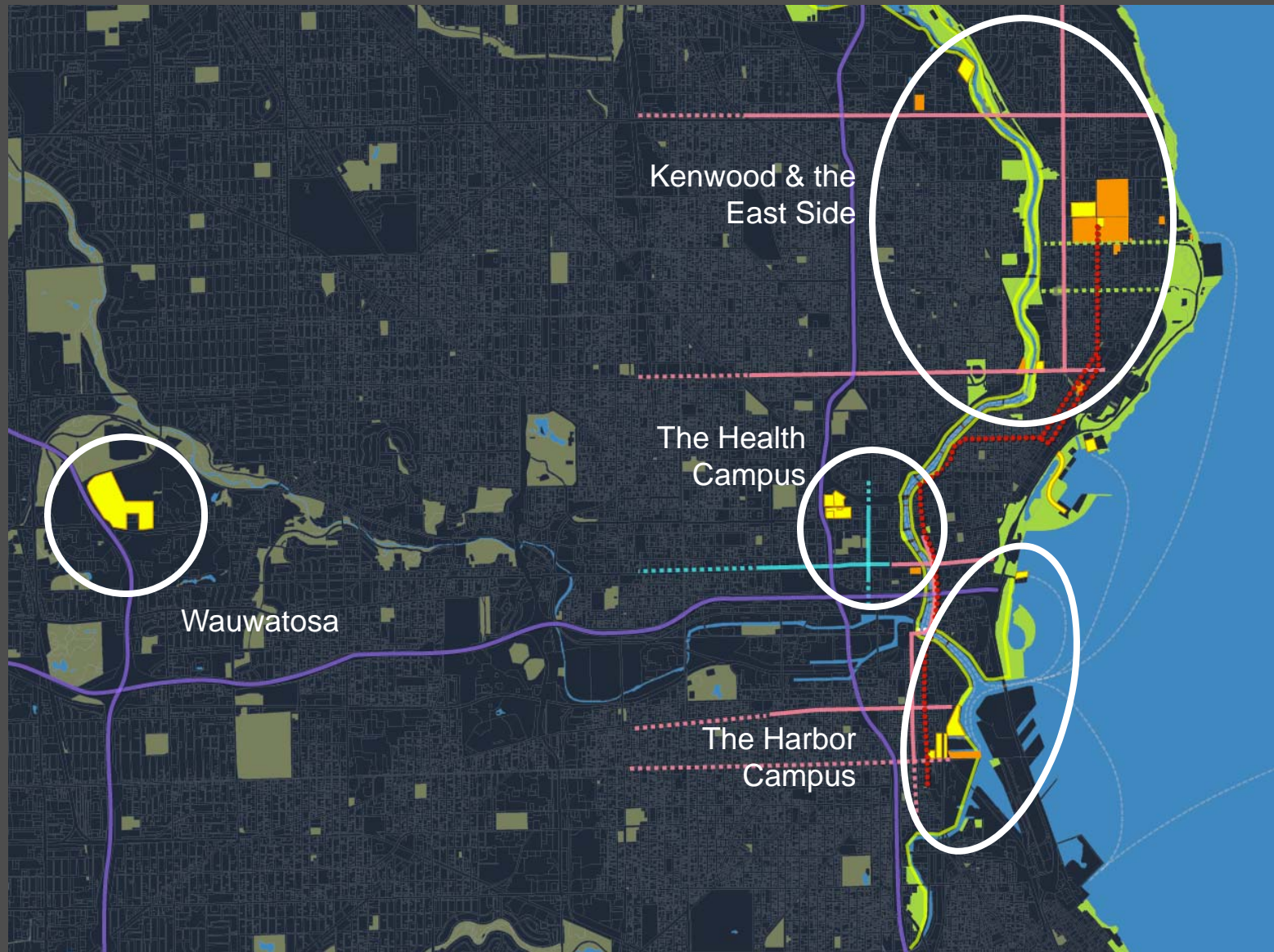
Freshwater Science and research

Health Campus

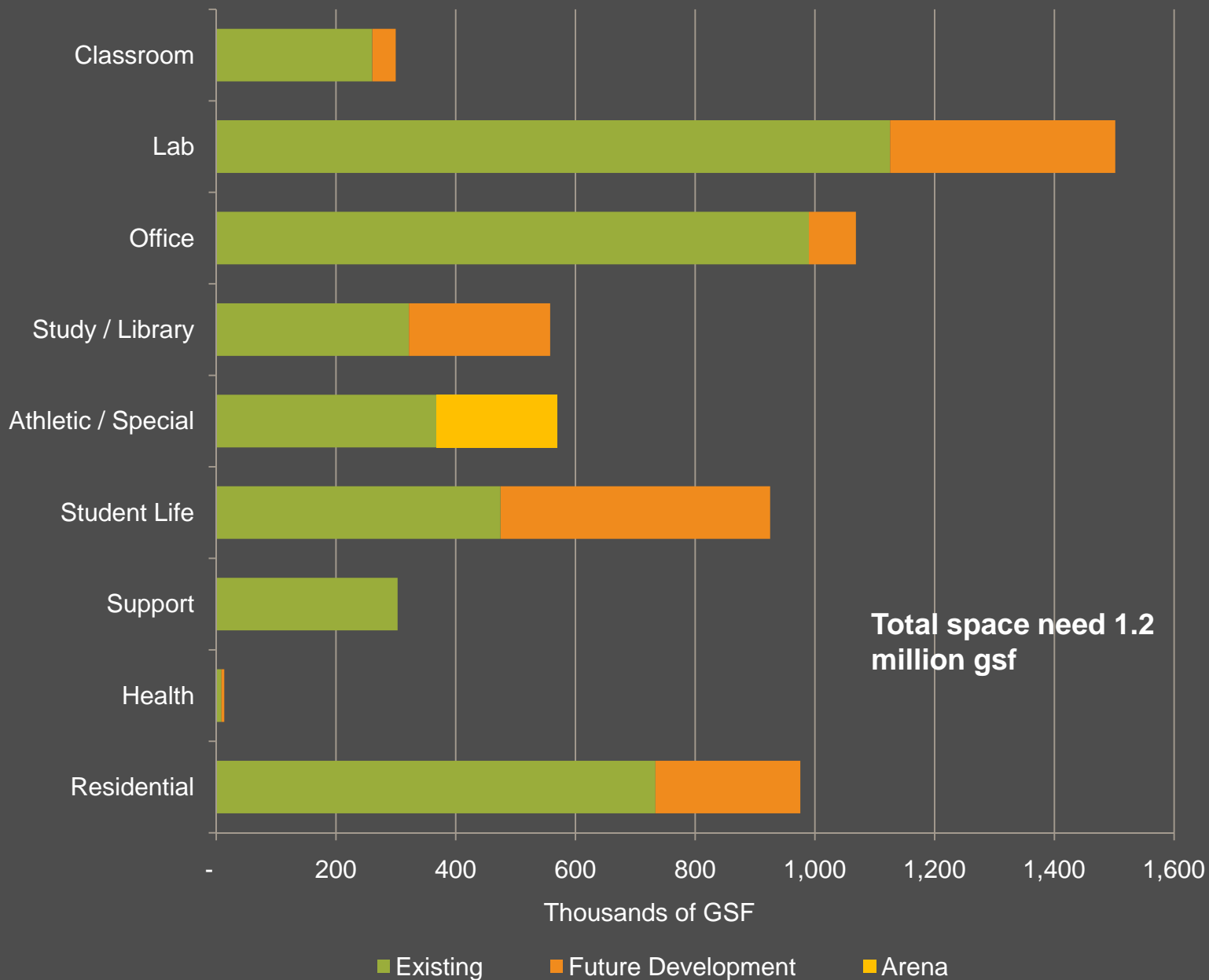
Public Health, Health Sciences, Nursing, Shared clinical space

Wauwatosa

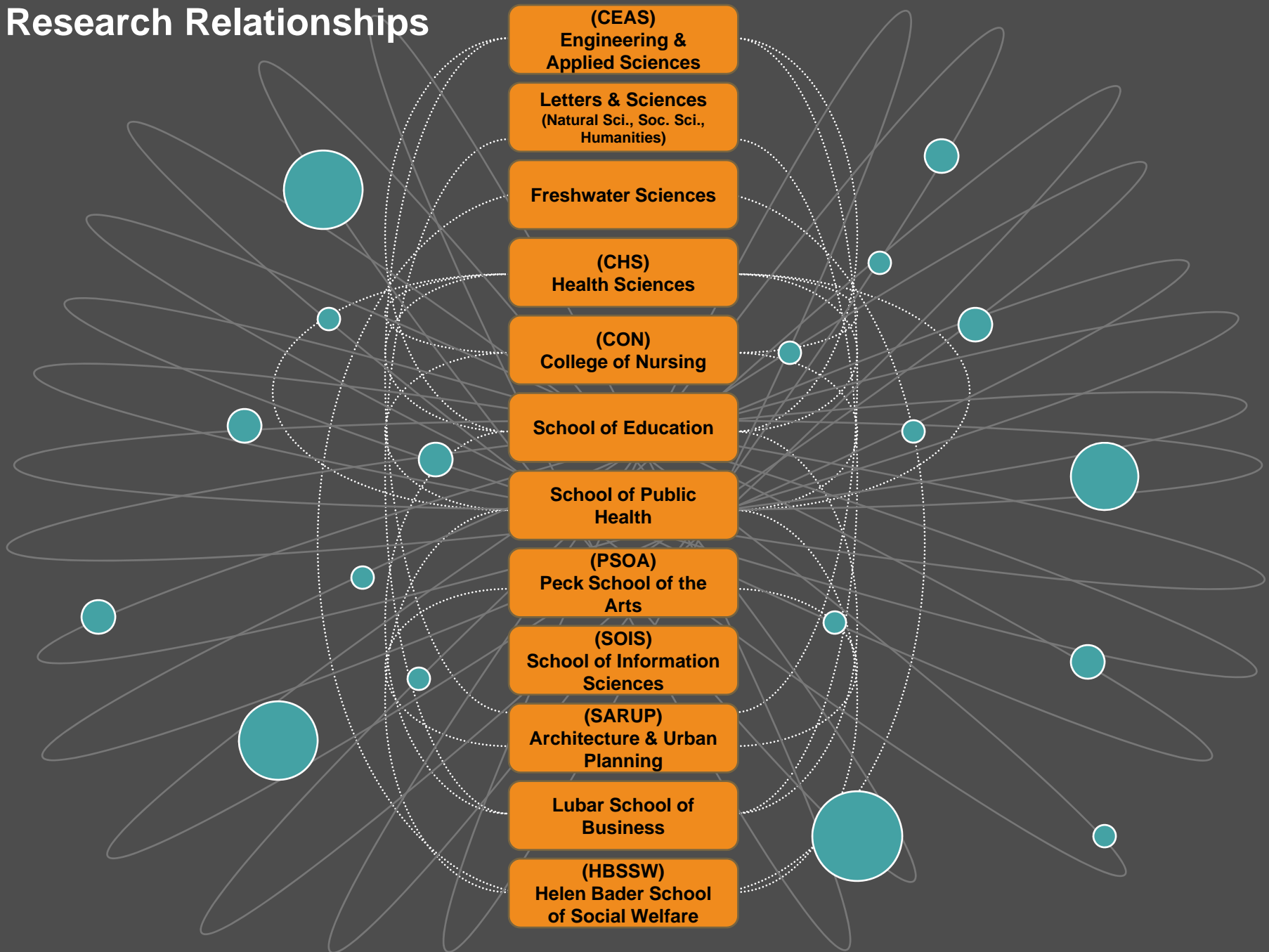
Research clusters



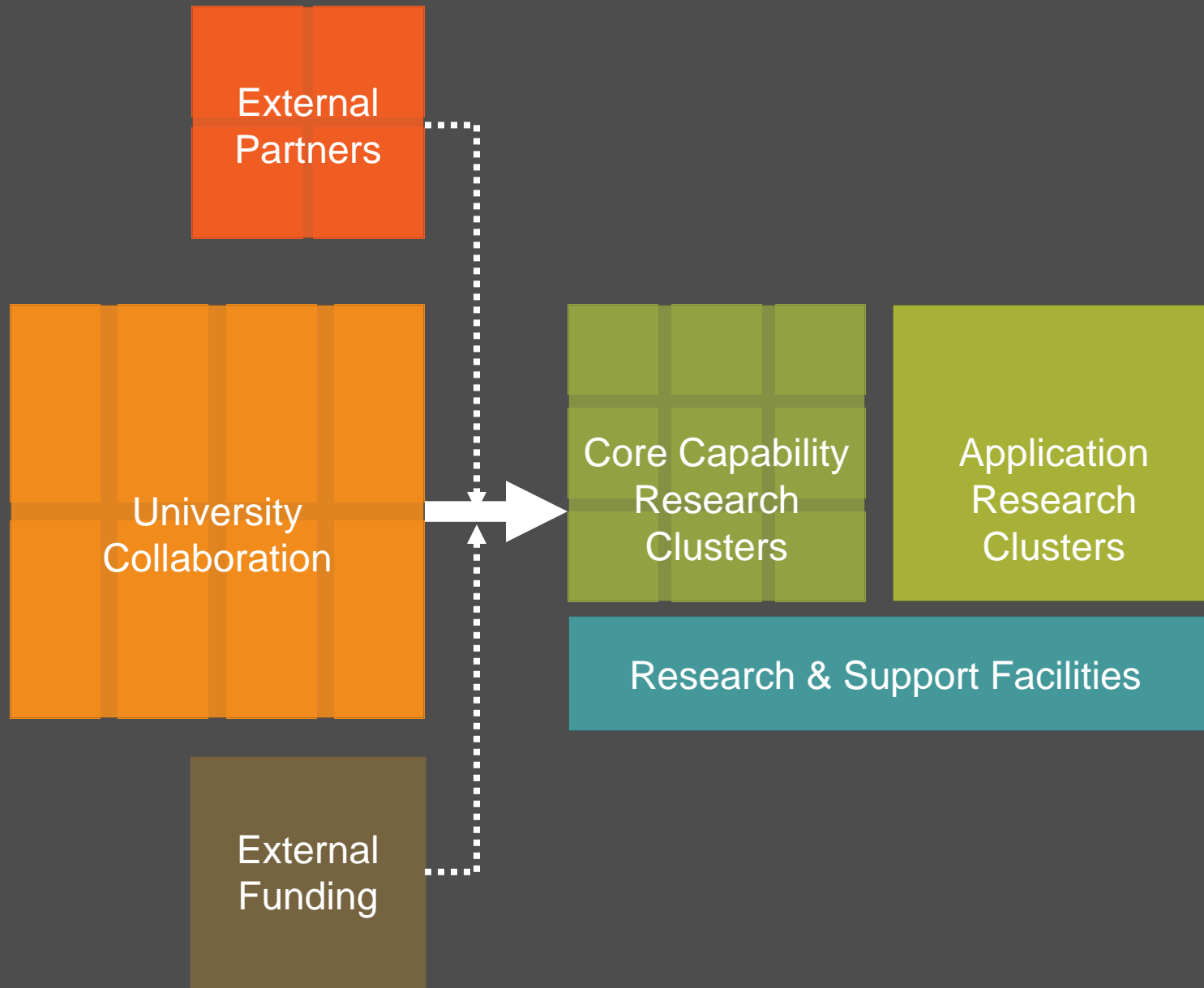
Program: Existing and Projected Space by Type



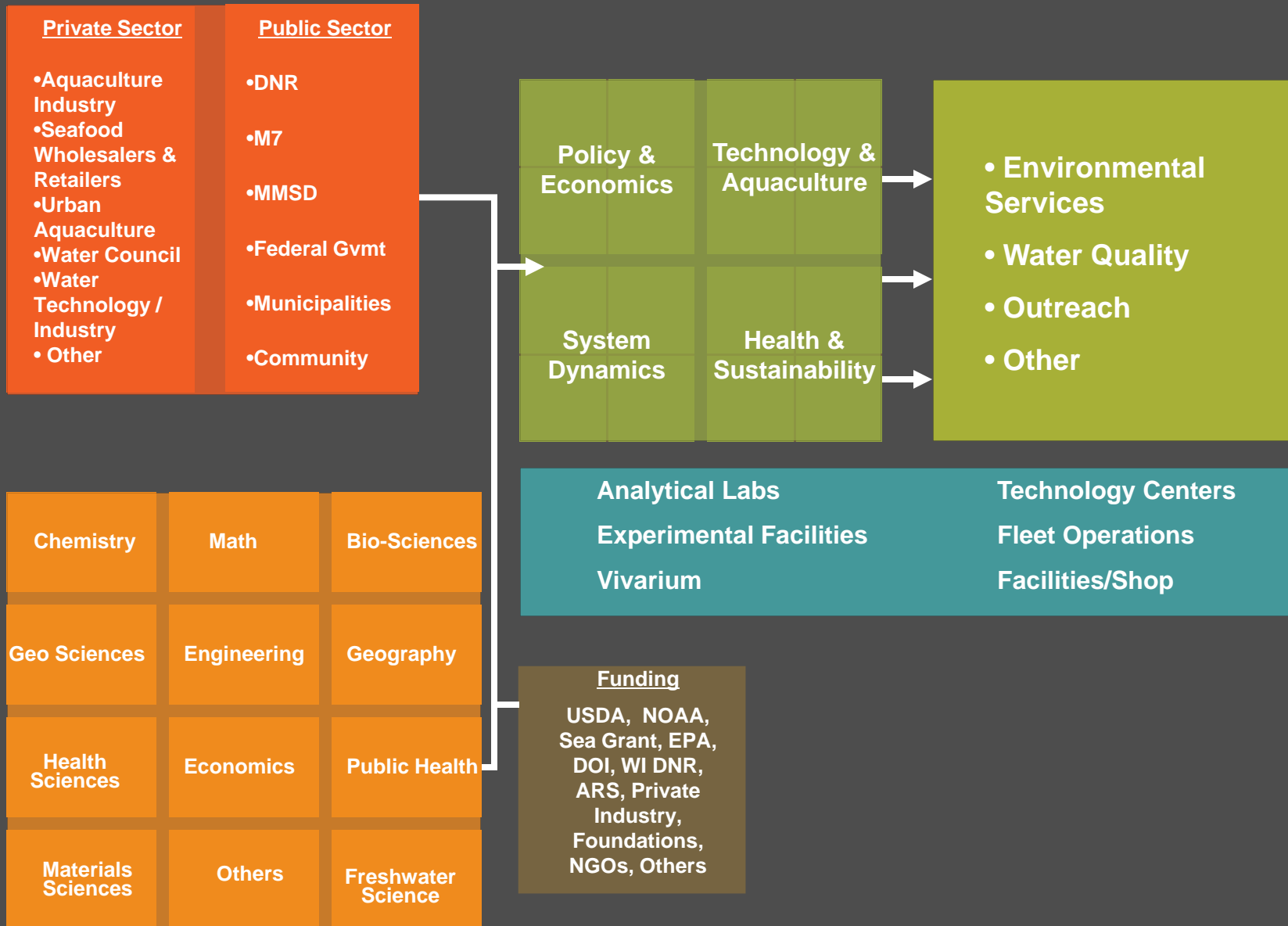
Research Relationships



Research Clusters



Research Clusters – EXAMPLE - Water



Kenwood Campus: Today

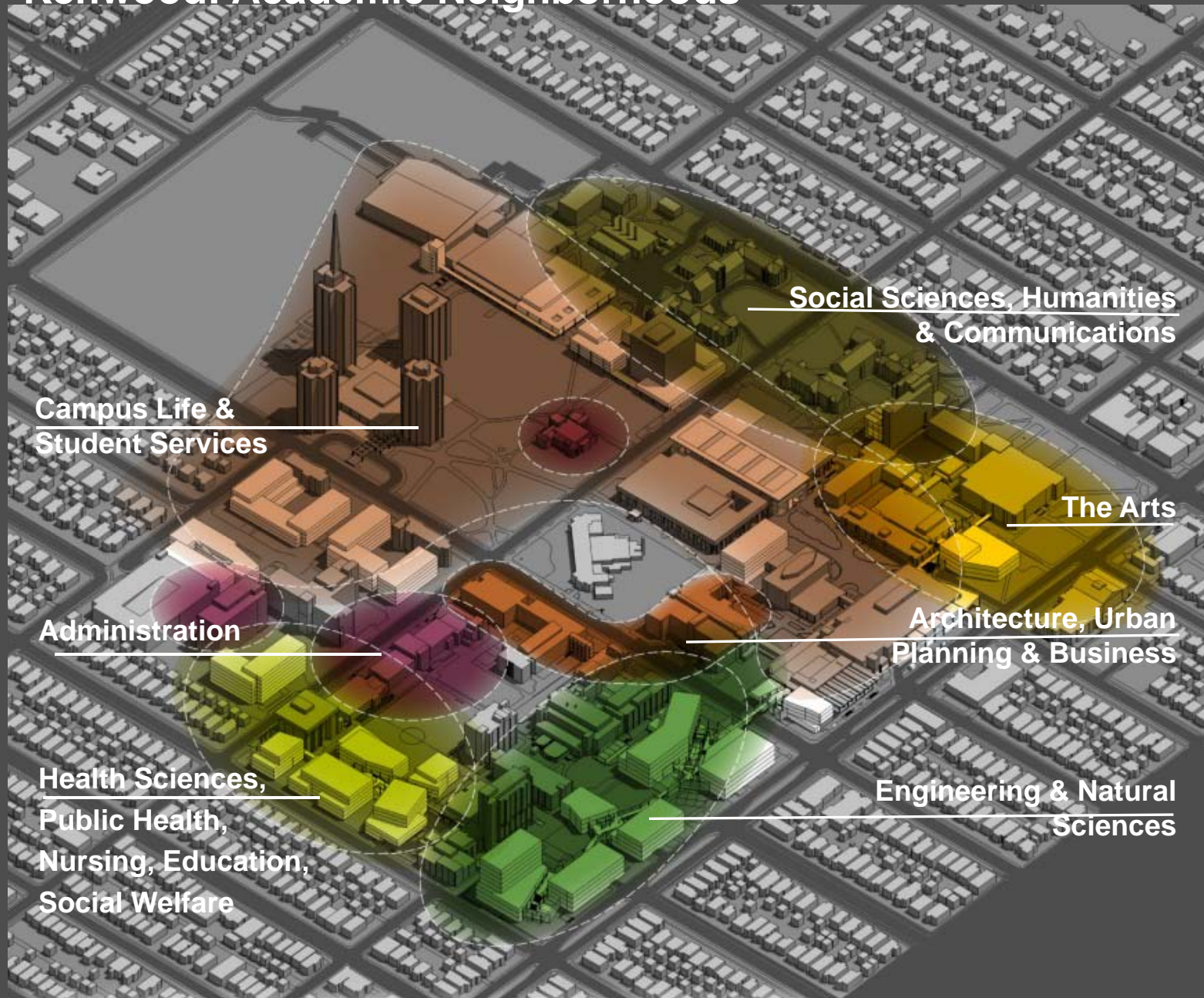


Kenwood Campus: In the Future



Kenwood: Academic Neighborhoods

Precincts with
related
faculties



Social Sciences, Humanities
& Communications

Campus Life &
Student Services

The Arts

Administration

Architecture, Urban
Planning & Business

Health Sciences,
Public Health,
Nursing, Education,
Social Welfare

Engineering & Natural
Sciences

Research Relationships

Kenwood Campus

Arts

**Professional
Studies**

**Humanities /
Social Sciences**

**Sciences/
Applied
Sciences**

Studios

**Performance
Space**

Executive Education

Computation Labs

Wet Labs

Vivarium

Computation

Instructional Space

Offices

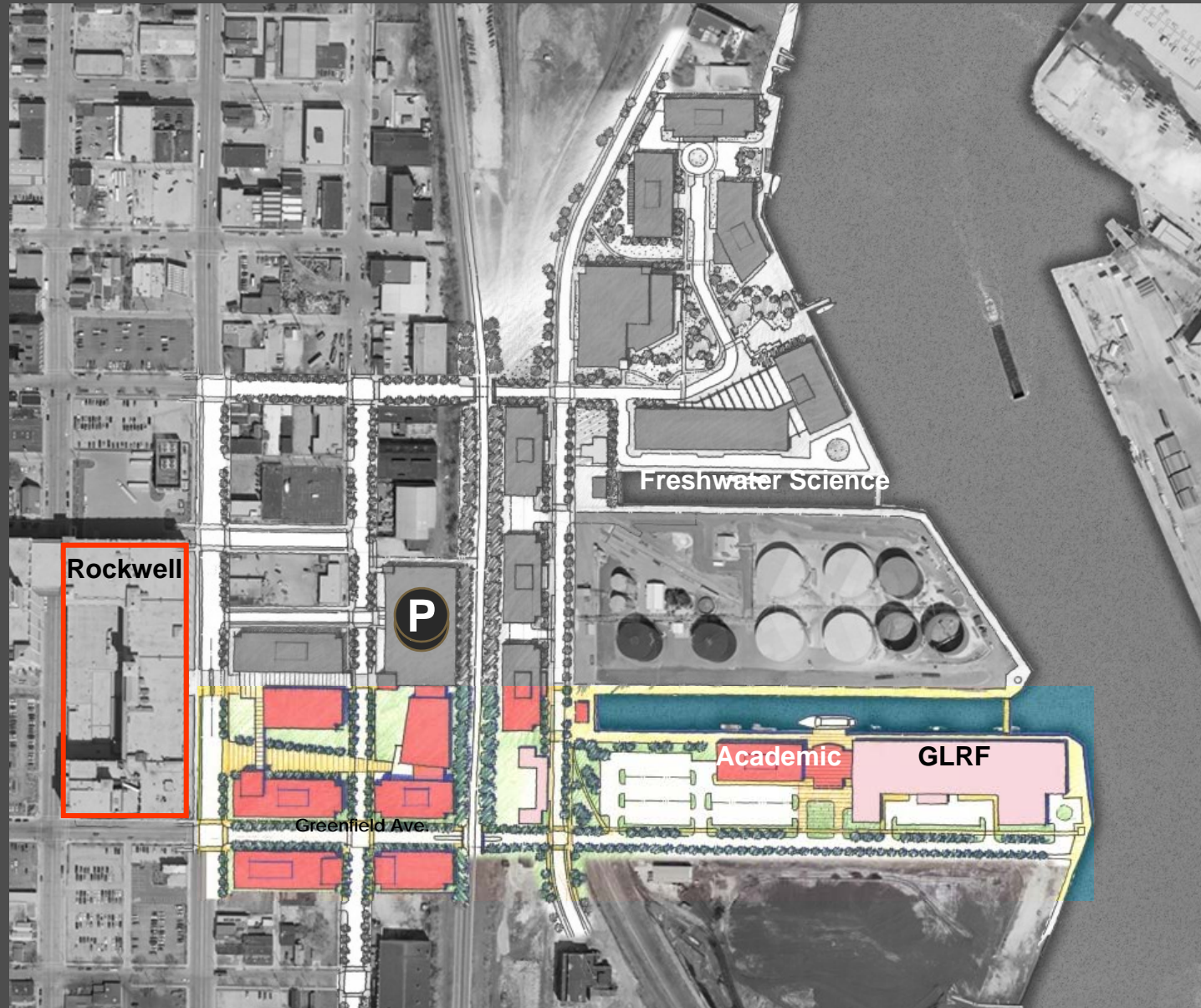
Student Life & Support

Public Space

Harbor Campus

RATIONALE:

1. Maintain critical dock and lake access
2. Serve as a catalyst for the regeneration of the 5th Ward
3. Serve as a model for environmental clean-up and stormwater management
4. Immediately available for development



Research Relationships

Harbor

Energy

Water

Advanced
Manufacturing

Computation

Testing

Wet Labs

Aquatic Vivarium

Wet Labs

Fleet Operations /
Shop

Computation

Clean Rooms

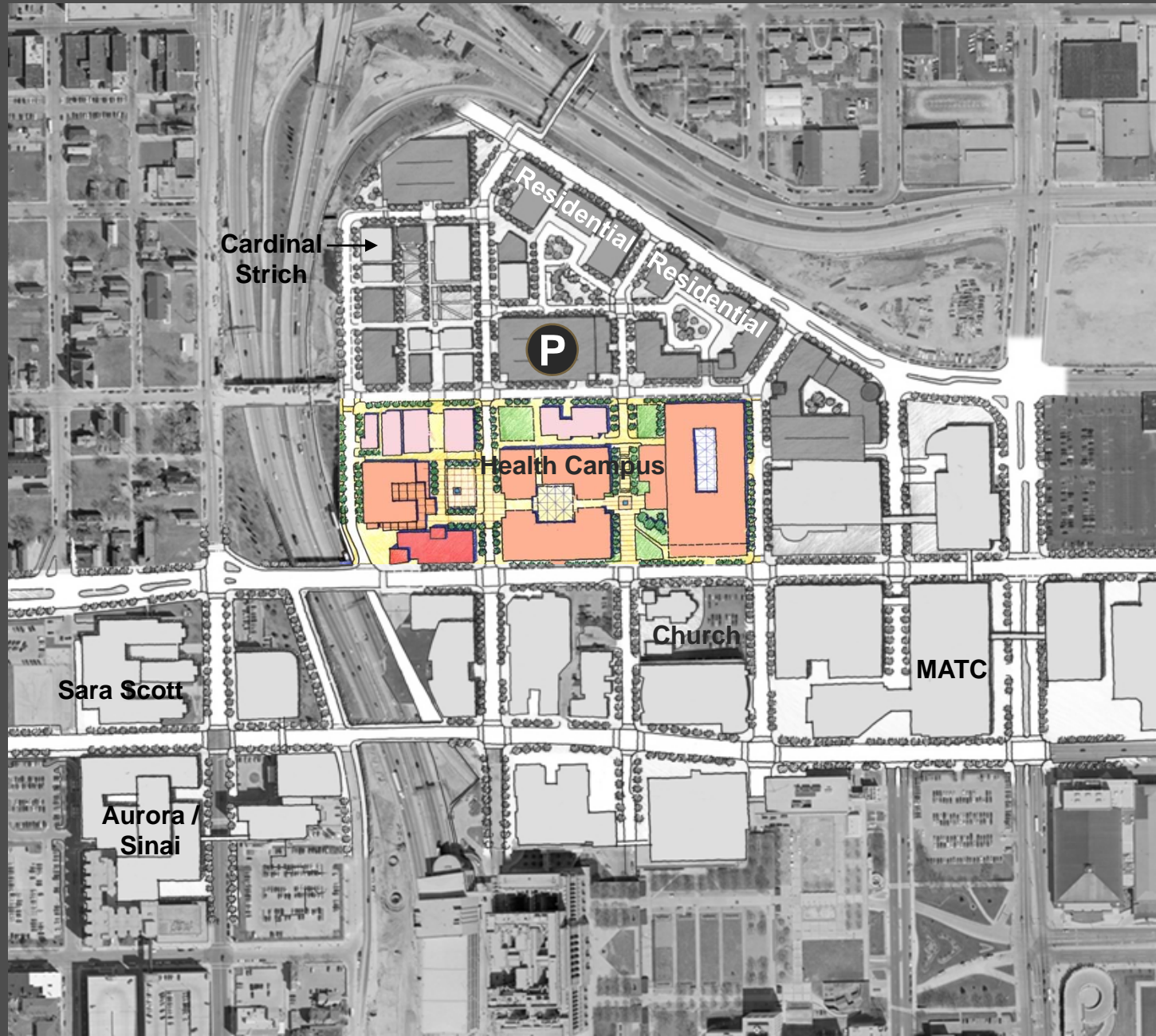
Testing

Instructional Space
Offices
Student Life & Support
Public & Outreach Space

Downtown

RATIONALE:

1. Position UWM as new center for clinical research
2. Locate within a vibrant district with a range of retail, food service, and residential amenities
3. Locate UWM in new part of the city
4. Proximity to partners: Aurora-Sinai and MATC
5. Immediately available for development



Research Relationships

Downtown

Health Care
Informatics

Prevention
& Wellness

Environment
& Population
Health

Urban
Initiatives /
Social Science
Research

Disease /
Disability /
Rehab

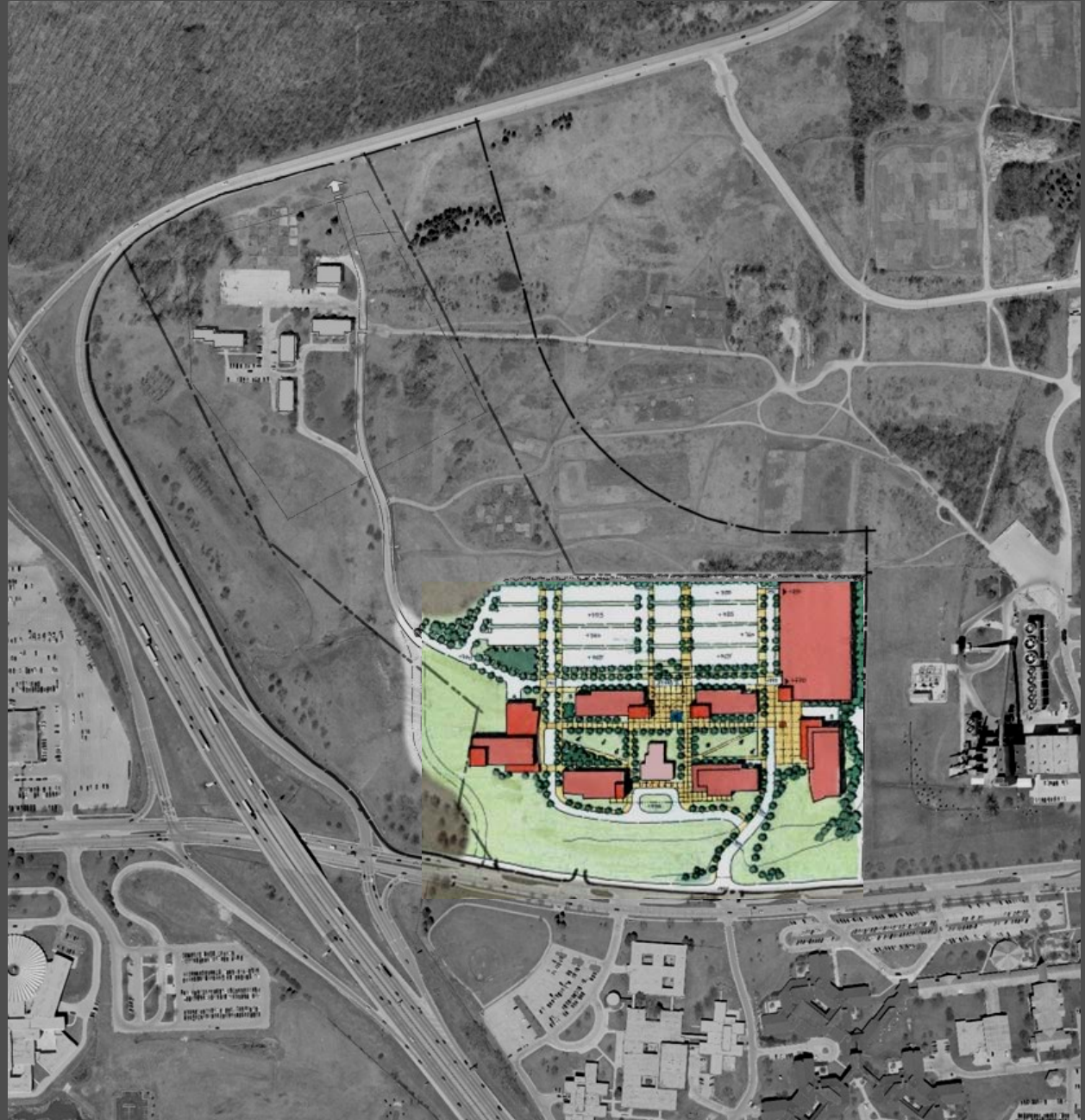
Clinical Space
Observation & Assessment
Computation
Public Outreach

Instructional Space
Offices
Student Life & Support
Public Space

Milwaukee County Grounds

RATIONALE:

1. Create a cluster research district with multidisciplinary research centers
2. Establish relevancy by locating near key partners



Research Relationships

County Grounds

**Bio Medical
Science**

**Bio Medical
Engineering**

Transportation

Computation

Wet Labs

Vivarium

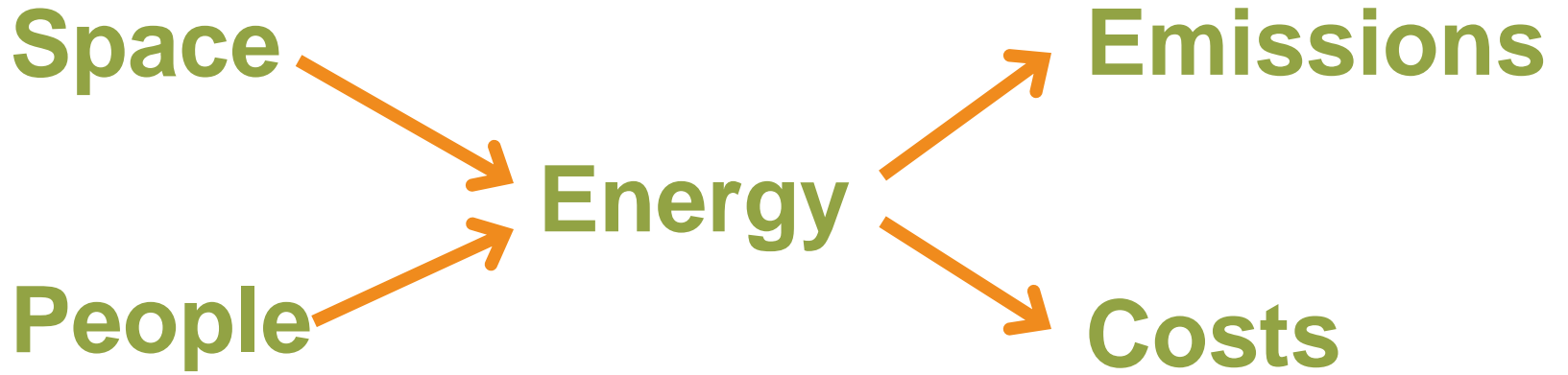
Seminar & Conference Space

Offices

Student Life & Support

Public Space

Sustainability



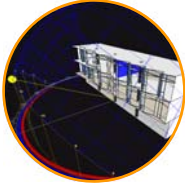
Green Principle Categories



Community: Social/ Economic



Water Resources



Energy & Emissions



Natural Systems

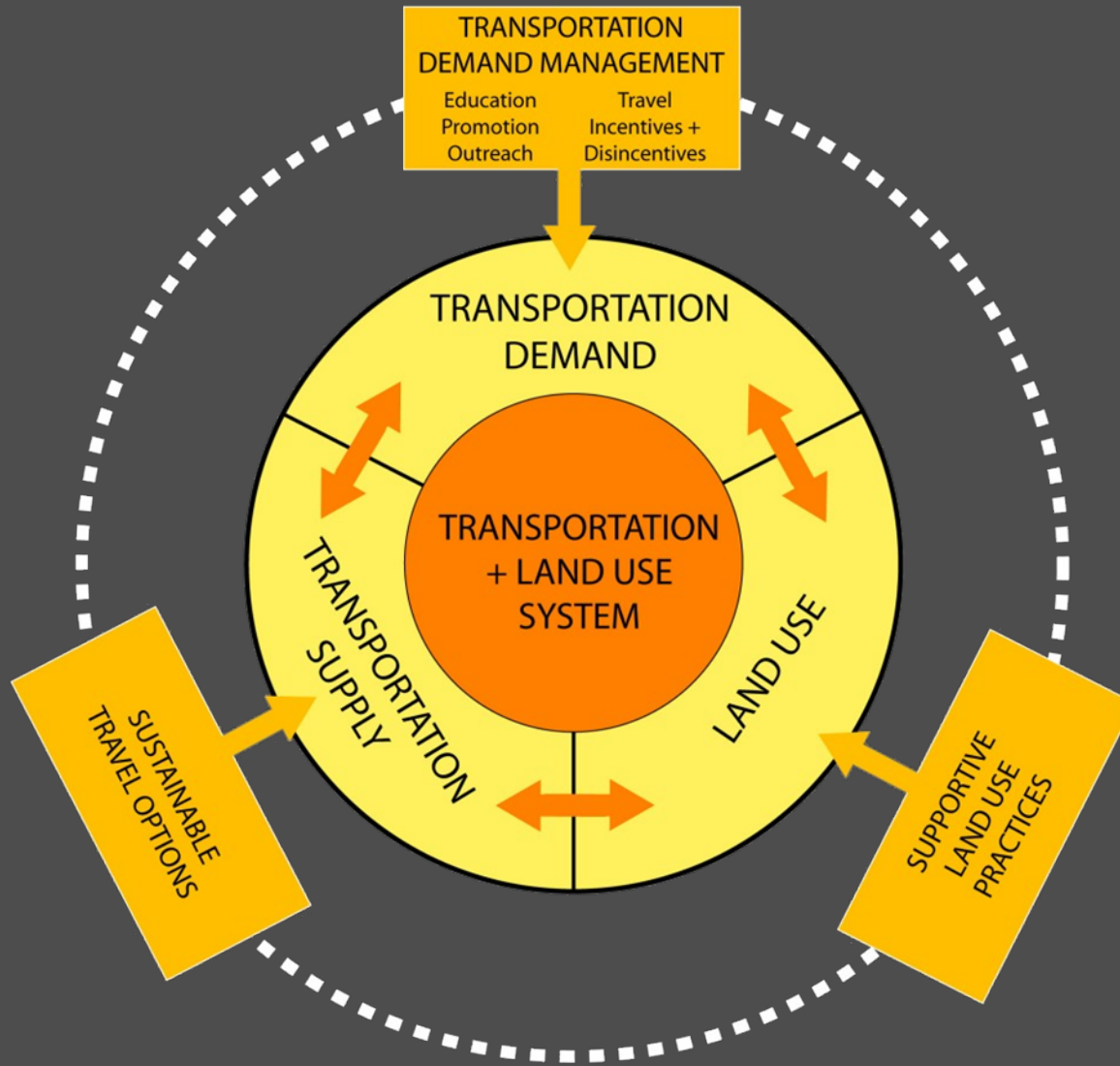


Transportation Options



Materials

A Comprehensive Approach to Transportation



Campus Life

- Study space / Learning commons
- Activate first floors of existing buildings
- Recreation and open space
- Athletics
- Collaboration space
- Student Housing



Campus & Community

UWM's Existing Neighborhood Initiatives

- **COAST**
 - Student leadership in community relations
- **University Neighborhood Relations Office**
 - Walk to Work Employee Home Ownership Program
- **University Neighborhood Association**
- **Neighborhood Housing Office**
- **Milwaukee Landlord Program**
 - City of Milwaukee offers free landlord training courses
 - Required by UWM in order for landlords to register with the UWM housing site



Moving Forward...

- Opportunity sites design
- Programmatic fit at sites
- Kenwood design detail
- Research Cluster
- Space Distribution
- Decision Tree
- Implementation – *infrastructure, financial, resource sustainability, feasibility & timing*
- Design Guidelines



Greatness is not in where we stand, but in what direction we are moving. We must sail sometimes with the wind and sometimes against it – but sail we must and not drift, nor lie at anchor.

-Oliver Wendell Holmes

