



2011-13 Capital Budget

David L. Miller
Associate Vice President
Capital Planning and Budget

Statutory Requirements for Long Range Planning

- Legislative requirement for long-range public building programs with funds provided by successive legislatures.
- Requirement for all state agencies to report proposed projects through the State Building Commission by September 15 of even-numbered years
- Requirement for the Board of Regents to establish a process for approving and submitting building projects to the building commission.

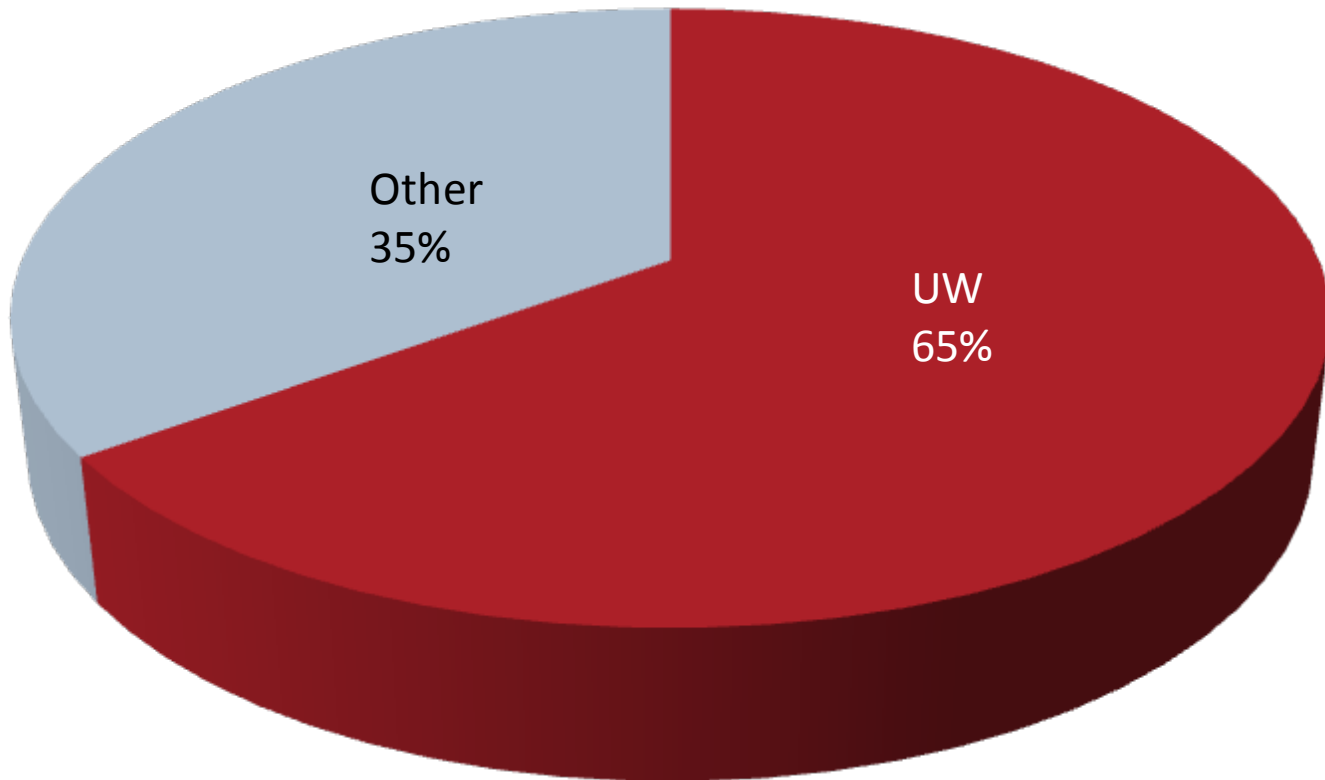
UW System Facilities

- Approximately 58,000,000 GSF
 - 37,700,000 academic (state supported)
 - 20,300,000 student life (university auxiliaries)

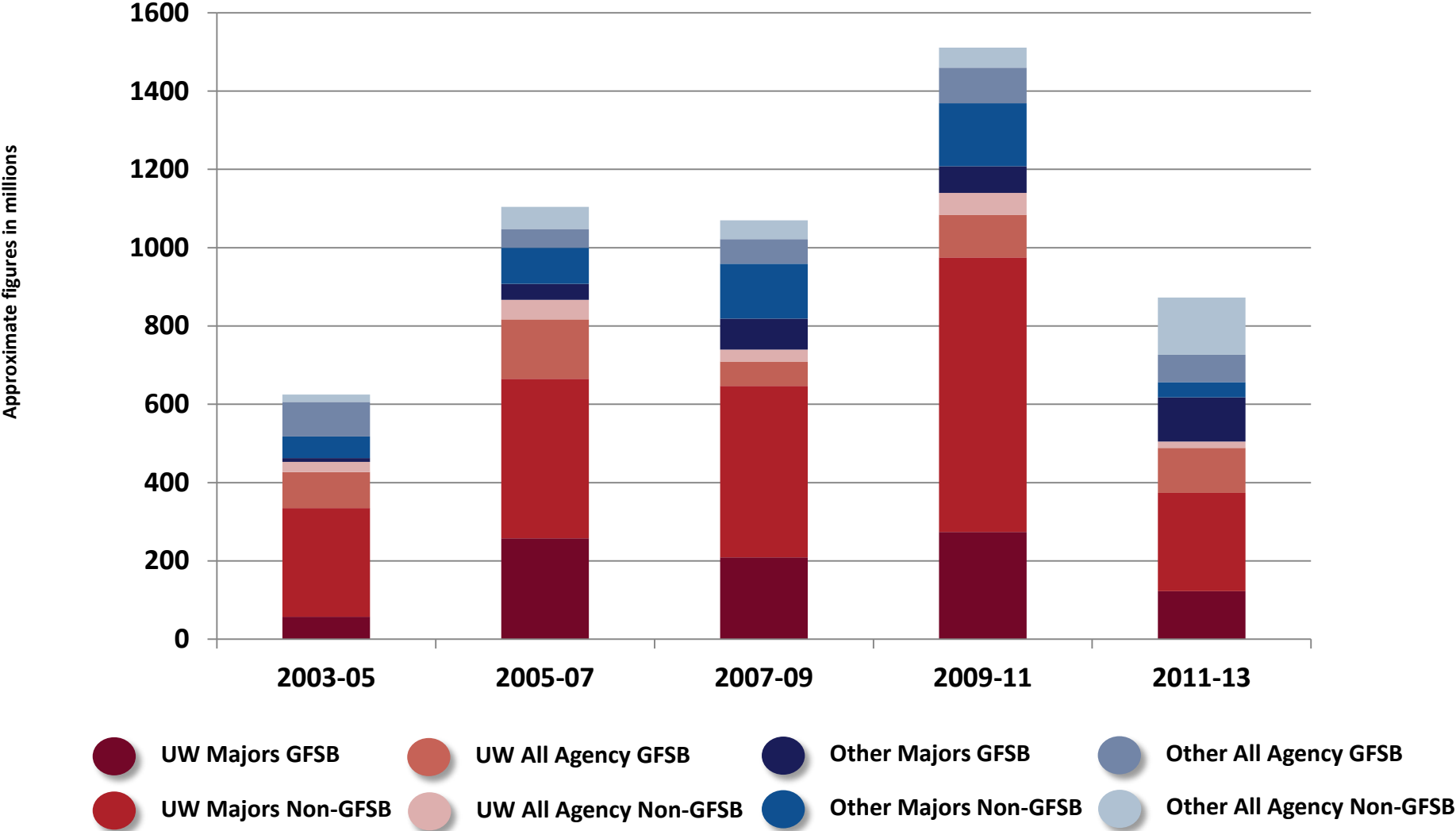
- Impact of Capital Projects 2011-13
 - 13 major academic projects 2.8% of space
 - 21 major student life projects 5.5% of space

Building Program: Magnitude

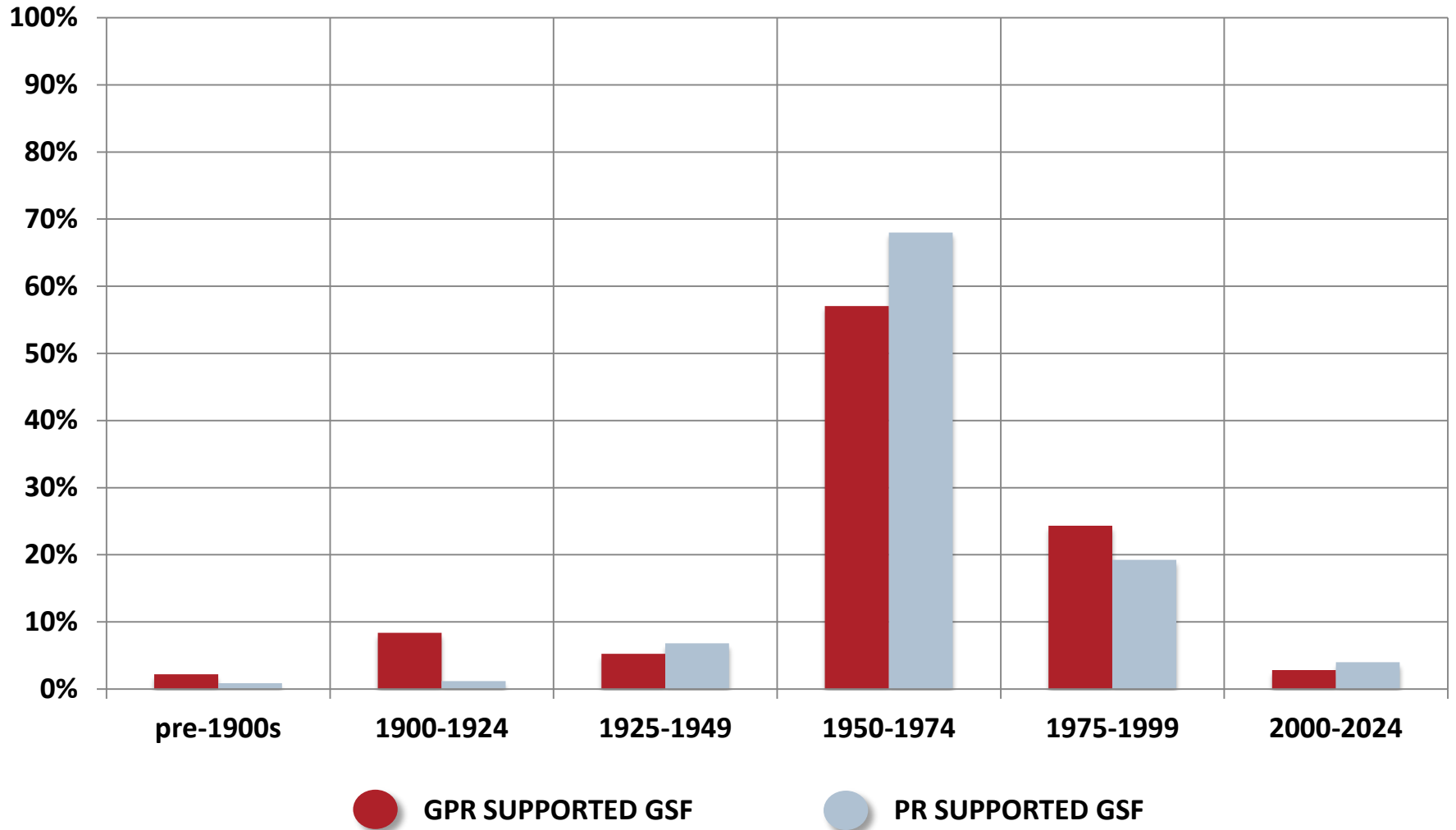
State Owned Facilities



Building Program: All Agencies, All Funds



UW Construction Chronology



Capital Budget Funding Sources

Two Categories of Bonding for Capital Projects

- **GFSB** - General Fund Supported Borrowing
State-issued bonds repaid with state tax GPR
- **PRSB** - Program Revenue Supported Borrowing
State-issued bonds repaid with UW-PR, including segregated fees

Two Categories of Projects

- **Major Projects** – require specific statutory enumeration; over \$760,000
- **All Agency Funds** – A facilities maintenance fund for all state agencies.
The UW receives about 60% of the total.

Comparison of General Fund Supported Borrowing for All State Projects

Approximate figures in millions	2005-07	2007-09	2009-11	2011-13	2013-15
UW General Fund Supported Borrowing for Major Projects	\$150	\$218	\$222 \$153 new	\$277 \$222 Existing	\$ \$98 Existing
All Other State GFSB Major Projects	\$50	\$50	\$85	\$53	\$
Statewide GFSB for All Agency (including UW)	\$200	\$125	\$205 UW \$109	\$180	\$
Total New GFSB for the Biennium	\$400	\$423	\$512	\$510	\$535

State of Wisconsin
guideline:

General Fund Supported Borrowing debt payments should average about 4% of state General Purpose Revenue

2013-15 General Fund Supported Borrowing

**Existing
Advance Enumerations
\$98 M**

UW-Milwaukee: Master Plan Initiative - Kenwood IRC
UW-River Falls: Falcon Center
UW-Madison: Nursing

**New Enumerations
\$**

**Renovation &
Repair Base
\$**

UW System: Classrooms & IT
UW System: Utilities
UW System: All Agency and Facility Renewal

**Total
\$400 M**

**Advance
Enumeration
2015-17 GFSB**

Building Process: Current Enumeration

Major Projects

> \$760,000
Any Fund
Source

- All New Space
- Major Renovations
- Major Repairs

All Agency Projects:
Categorical Enumeration

< \$3,000,000
Any Fund
Source

- Facility Repair and Renovation
- Utility Repair and Renovation
- Health Safety and Environment
- Preventative Maintenance
- Programmatic Remodeling
- Land Purchase/Acquisition
- Capital Equipment

Building Program: Alternative

Major Projects

Facility Maintenance,
Repair, & Renovation

> \$1,000,000
Any Fund
Source

All Existing
Space
Any Fund
Source

- New Buildings & Additions

- Individual projects would be approved by the Board of Regents and the State Building Commission

UW Institutions' Requests for General Fund Projects – 2013-15

- 22 Academic Projects
\$822 million (\$737 M GFSB + \$112 M PR/Gifts)
- 19 Student Life & Auxiliary Projects
\$530 million (\$466 M program revenue + \$25 M Gifts)

General Fund Major Project Priority Criteria

Physical Development Needs 40%

- Codes and health/safety
- Infrastructure and maintenance
- Facility reuse

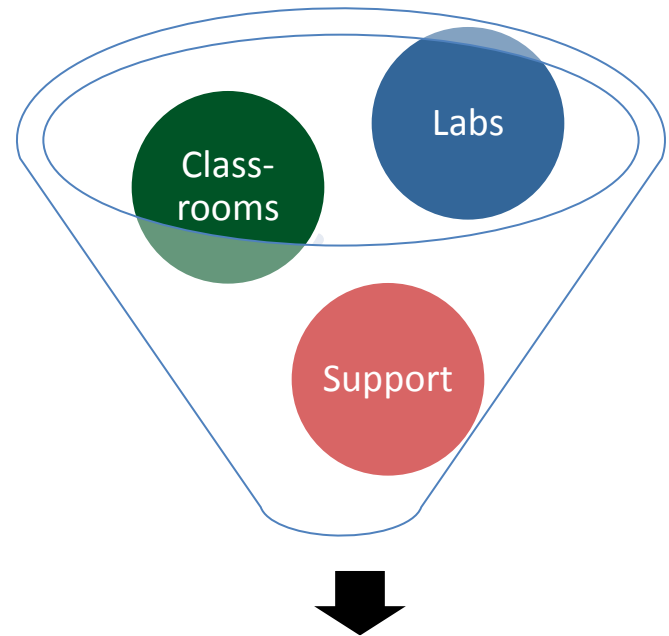
Institutional Planning 20%

- Number 1 institutional priority for 2013-15
- Priority rank in prior biennia
- Project development and sequence

Programming 40%

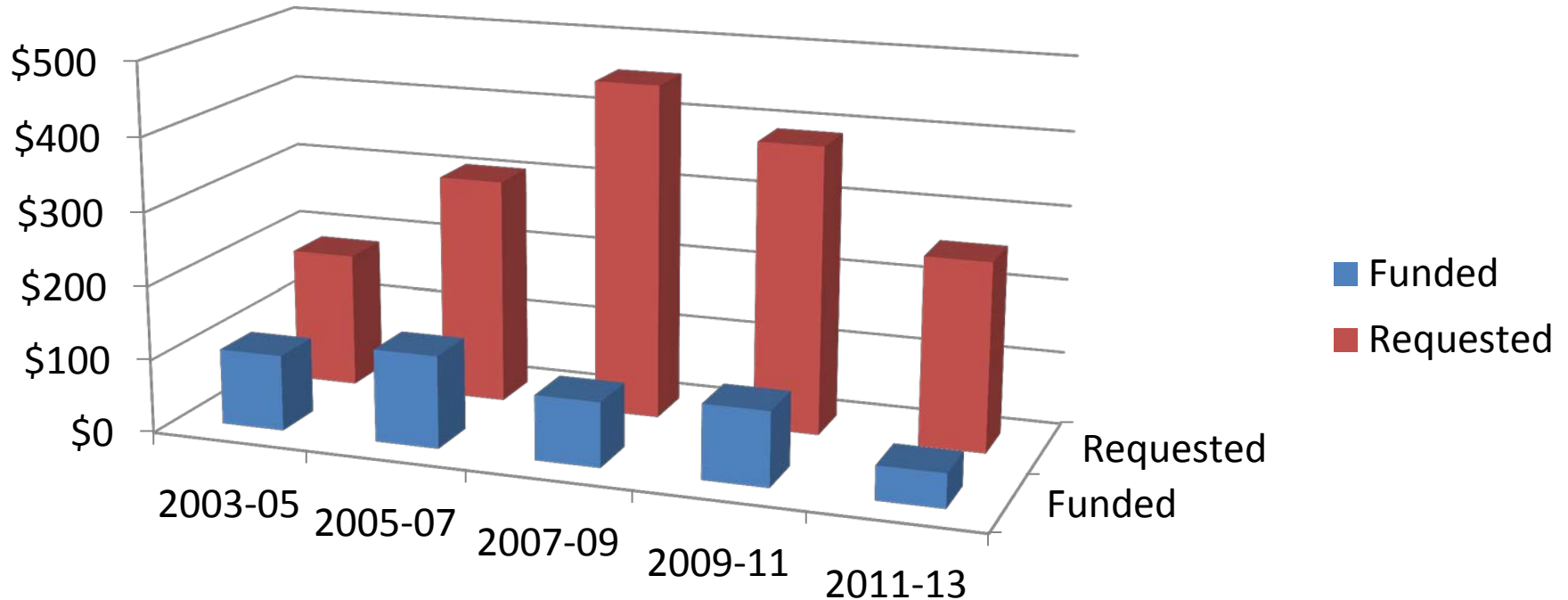
- Functionality
- Space need and space utilization,
- Operational impact

**Increasing need of funding
for academic facilities**



Limited funding available

UW System Facilities: Maintenance



Benchmark: \$3/GSF would require approximately \$230 million per biennium to maintain existing facilities.

Recently Completed Projects

Classroom/IT Program



Active Learning Classroom



**Lecture Hall –
After**

Lecture Hall - Before



02.21.2008

02.08.2010

Recently Completed Projects

All Agency Program

Chilling Plant - Exterior



Chilling Plant - Interior

Recently Completed Projects

Facilities Renewal Program



Carlson Hall - Before



Carlson Hall - After

Carlson Hall - After

Recently Completed Projects

Major Project - New & Renovation

School of Human Ecology - Before

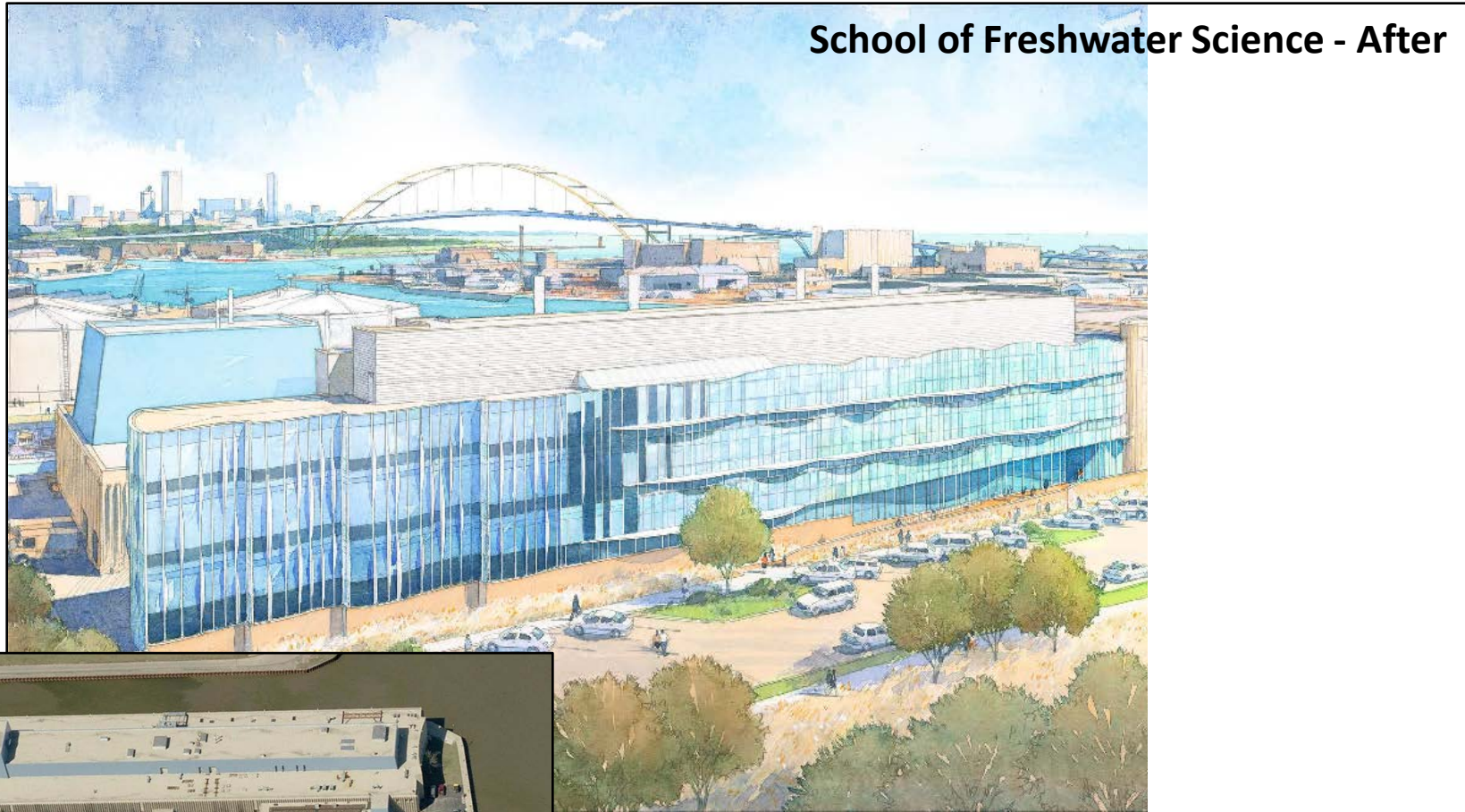


School of Human Ecology - After



Recently Completed Projects

Major Project - New & Renovation



Great Lakes Research Facility (GLRF) - Before