



UW ADMINISTRATION OVERVIEW

BOARD OF REGENTS
DECEMBER 5, 2024

JULIE GORDON, VICE PRESIDENT FOR FINANCE & ADMINISTRATION



UW ADMINISTRATION ORGANIZATION

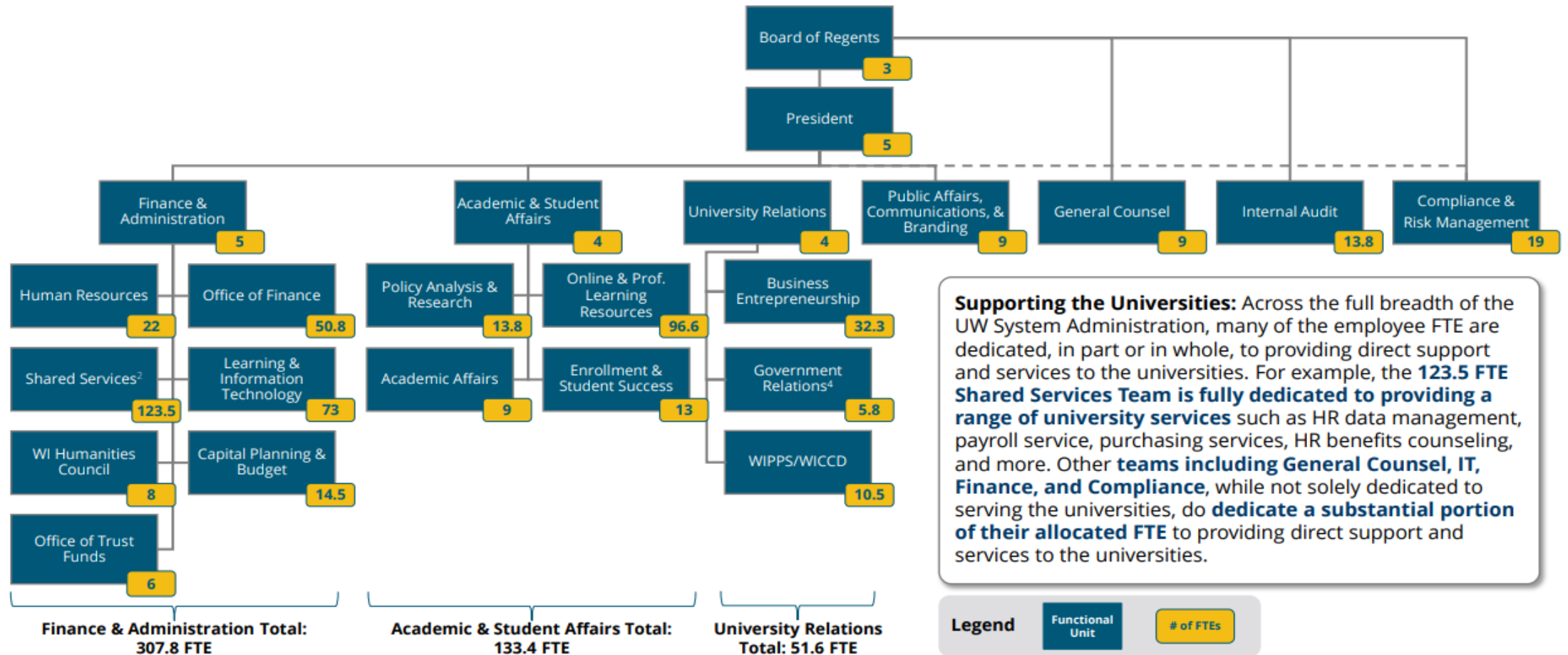


UW ADMINISTRATION

- Significant portion of UWSA employees **provide direct services** that would otherwise need to be completed at the university level.
 - Shared Services (payroll services, purchasing, HR benefits counseling, travel expense auditing)
 - Office of Learning & Information Technology (ITaaS, Networking as a Service)
 - Office of General Counsel
- Other offices are **hybrid**, providing direct services and management/oversight services
 - Compliance & Risk Management (workers compensation, title IX investigations)
 - Office of Finance (travel management services, grants administration)
 - Office of Enrollment & Student Success (GoWisconsin, direct admits)
- As of September 2024, UWSA has **523.2 FTE, or 1.5%** of total UW employment
 - Many offices/departments are grant or program revenue funded (e.g., Office of Business & Entrepreneurship)



UWSA ORGANIZATIONAL STRUCTURE





SERVICES AND SUPPORT FUNCTIONS

Academic & Student Affairs

- Academic Affairs
- Enrollment & Student Services
 - Go Wisconsin (application assistance)
- Online & Professional Learning Resources
- Policy Analysis & Research

Board of Regents/Office of President

- Compliance & Risk Management
- General Counsel
- Internal Audit
- Public Affairs, Communications & Branding
- WI Intercollegiate Athletics

University Relations

- Corp Relations & Economic Engagement
- Government Relations
- Business & Entrepreneurship
- Institute for Public Policy & Service

Finance & Administration

- Capital Budget & Planning
- Finance
 - Budget & Planning
 - Financial Administration
 - Financial Systems Support
 - Strategic Sourcing
 - Travel Management
- Human Resources
- Information Security
 - Cyber Defense
 - Governance Risk & Compliance
 - Security Outreach & Outreach
- Learning & IT Services
 - Client & Application Services
 - Enterprise Architecture & Planning
 - Libraries & Academic Technologies
 - Local Area Networking
 - Student Information Systems Services
 - Systems & Engineering

Finance & Administration (cont)

- Trust Funds
- Shared Services
 - Benefits Service Delivery
 - Business Services Service Delivery
 - Customer Success & Operational Communications
 - ERP Administration
 - HR Service Delivery
 - Payroll Core Processing
 - Payroll Service Delivery
 - Purchasing Service Delivery
 - Reconciliation & Financial Controls
 - Strategic Project Support & Management



HIGHER ED SYSTEM BENCHMARK

| | Universities of Wisconsin | Average of Responding Systems |
|---|---------------------------|-------------------------------|
| System Office Expenses per Student FTEs | \$868 | \$962 |

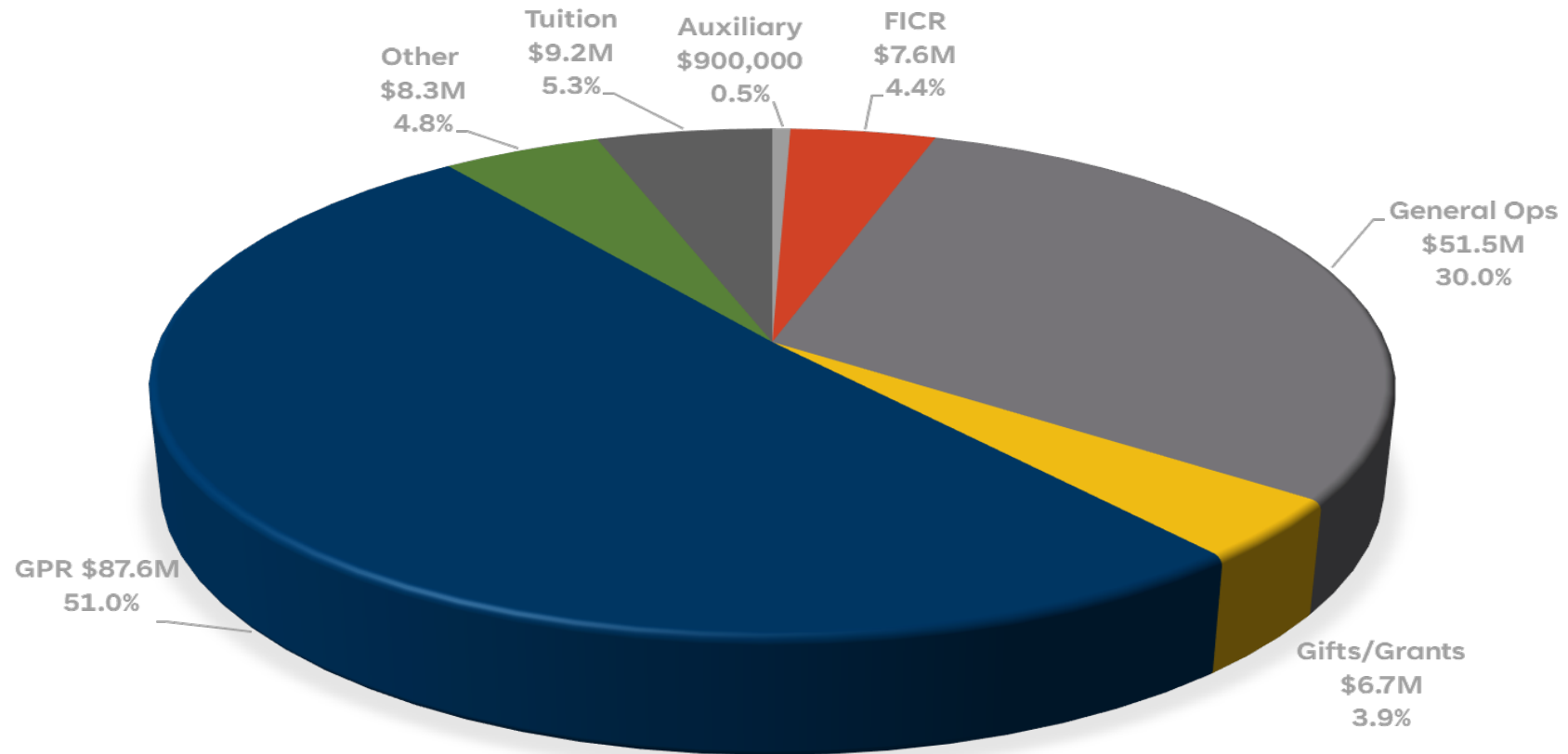
* 17 systems of higher education that include the University System of Maryland, Pennsylvania State System of Higher Education, and University of Tennessee System



UW ADMINISTRATION FINANCES



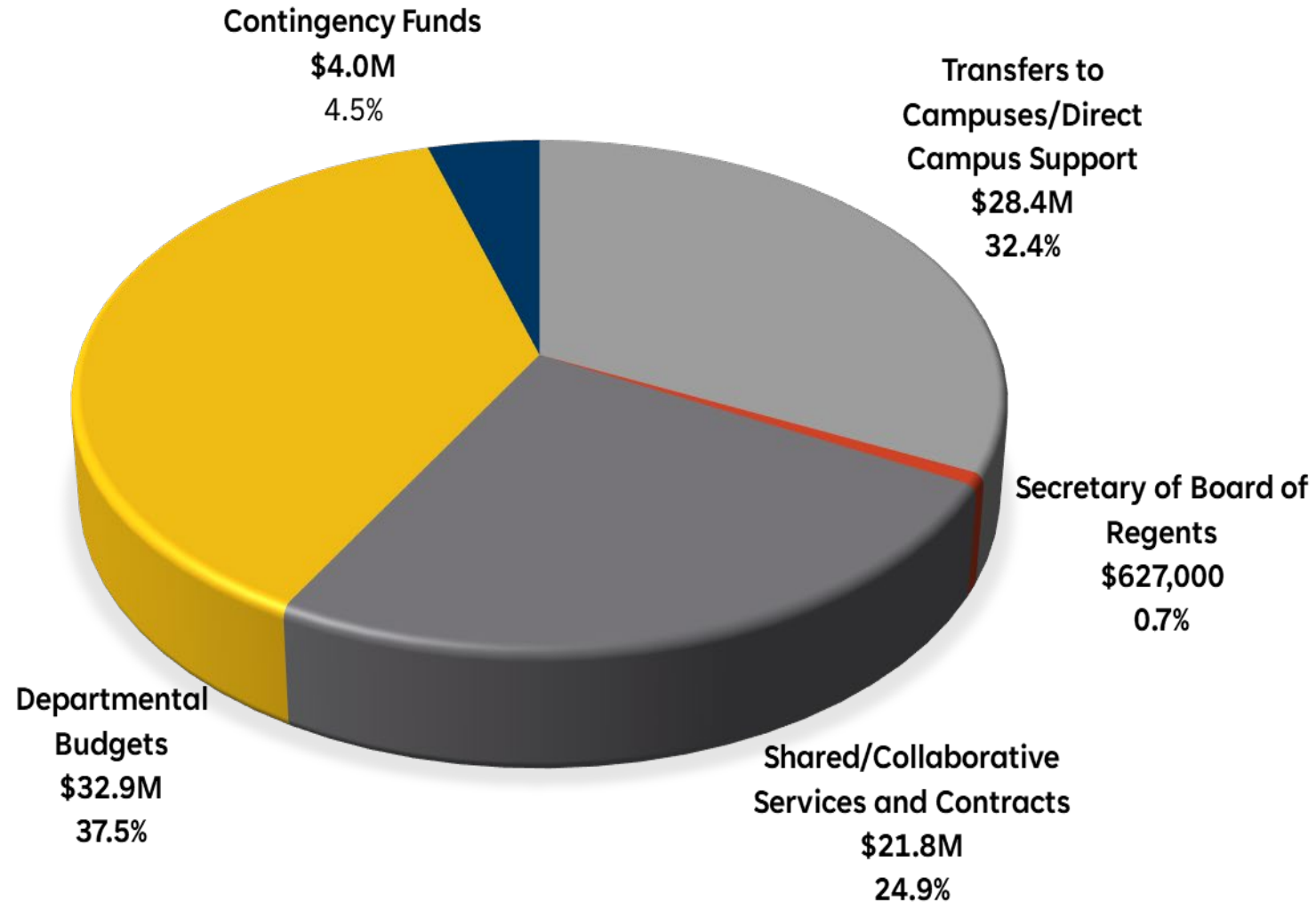
FY 2025 TOTAL UWSA BUDGET



Total FY25 Expense Budget: \$171.9M



FY 2025 UWSA GPR BUDGET

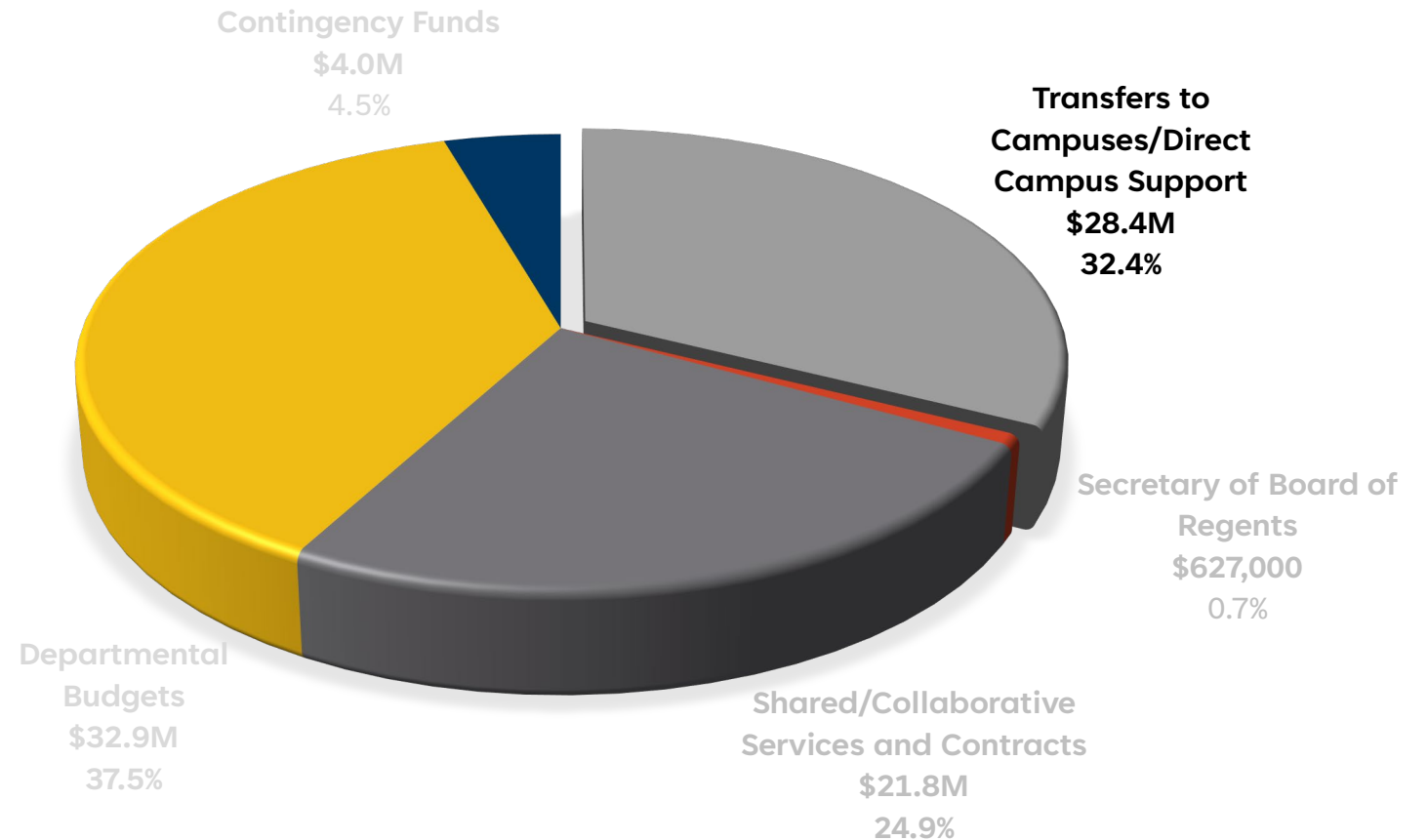


Total FY25 GPR: \$87.6M



FY25 GPR CAMPUS TRANSFERS & DIRECT CAMPUS SUPPORT

- Workforce Development Funds \$15.9M
- Utilities/Debt Service \$3.4M
- Library Resource Sharing \$3.3M
- Academic Affairs Support \$2.6M
 - Grants
 - Apply UW/UW Help
 - 360 Advising/EAB Navigate
 - Behavioral Health Initiatives
- Freshwater Collaborative \$2.1M
- Foster Youth Funding \$500,000
- Chancellor Pay Plan \$285,000
- Regent Awards \$90,000
- Survivor Tuition Remissions \$40,000

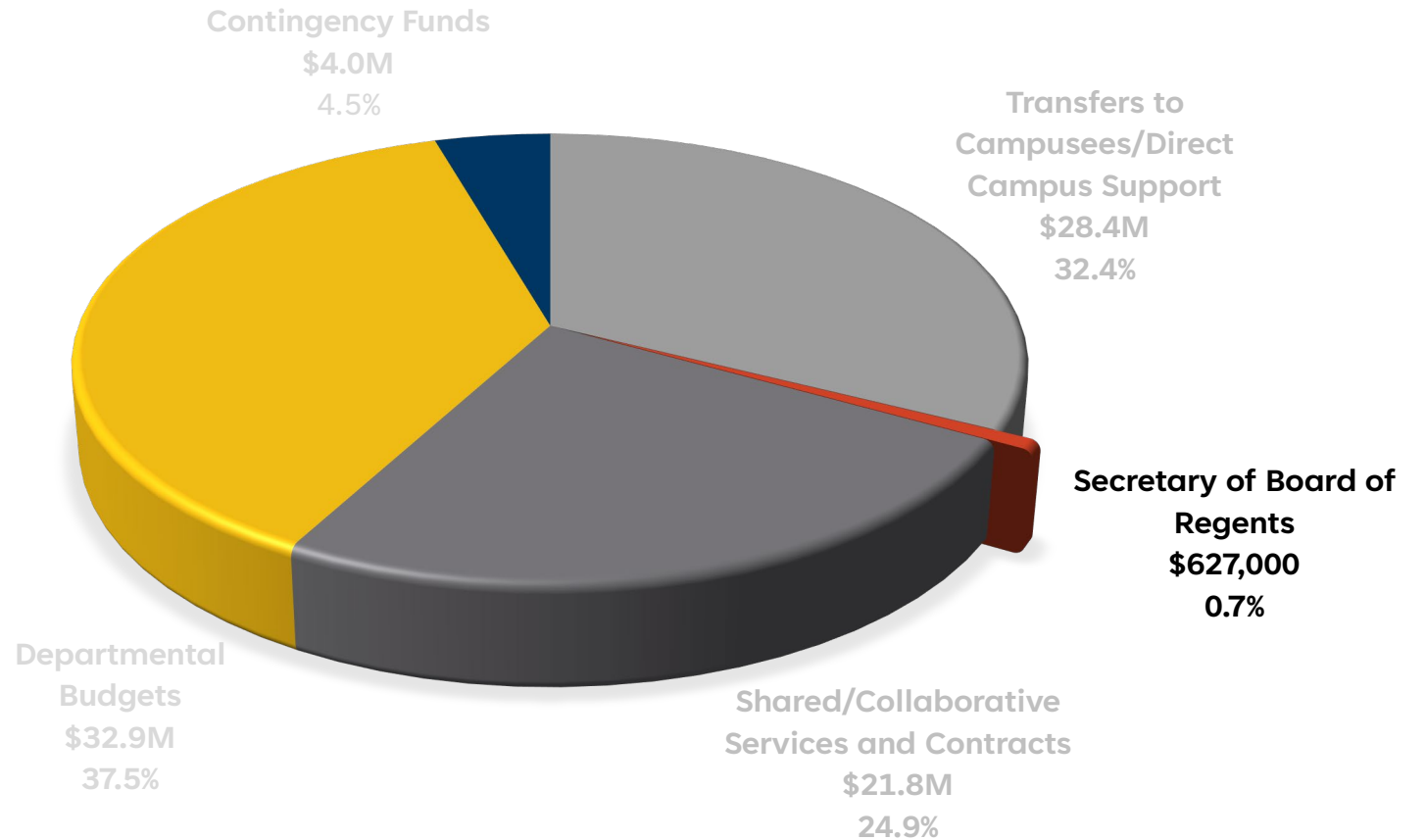


Transfers to Campuses/Direct Campus Support: \$28.4 Million (of \$87.6M total GPR)



FY25 GPR BOARD OF REGENTS

- Dedicated Board Staff
- Hosting of Board Meetings
- Publication of Notices
- Audio Visual and Technical Services
- Space Rental

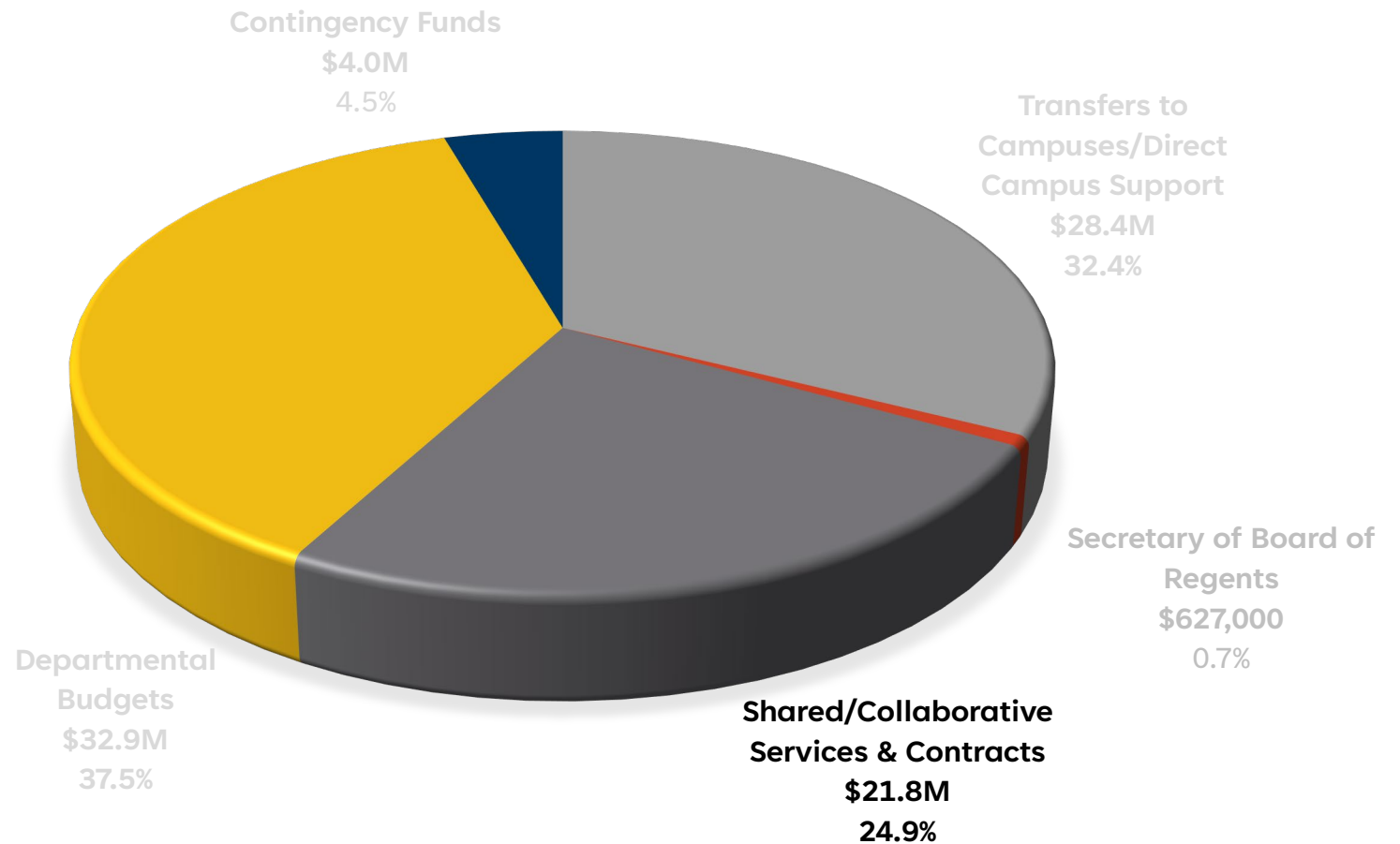


Secretary of Board of Regents: \$627,000 (of \$87.6M total GPR)



FY25 GPR SHARED/COLLABORATIVE SERVICES AND CONTRACTS

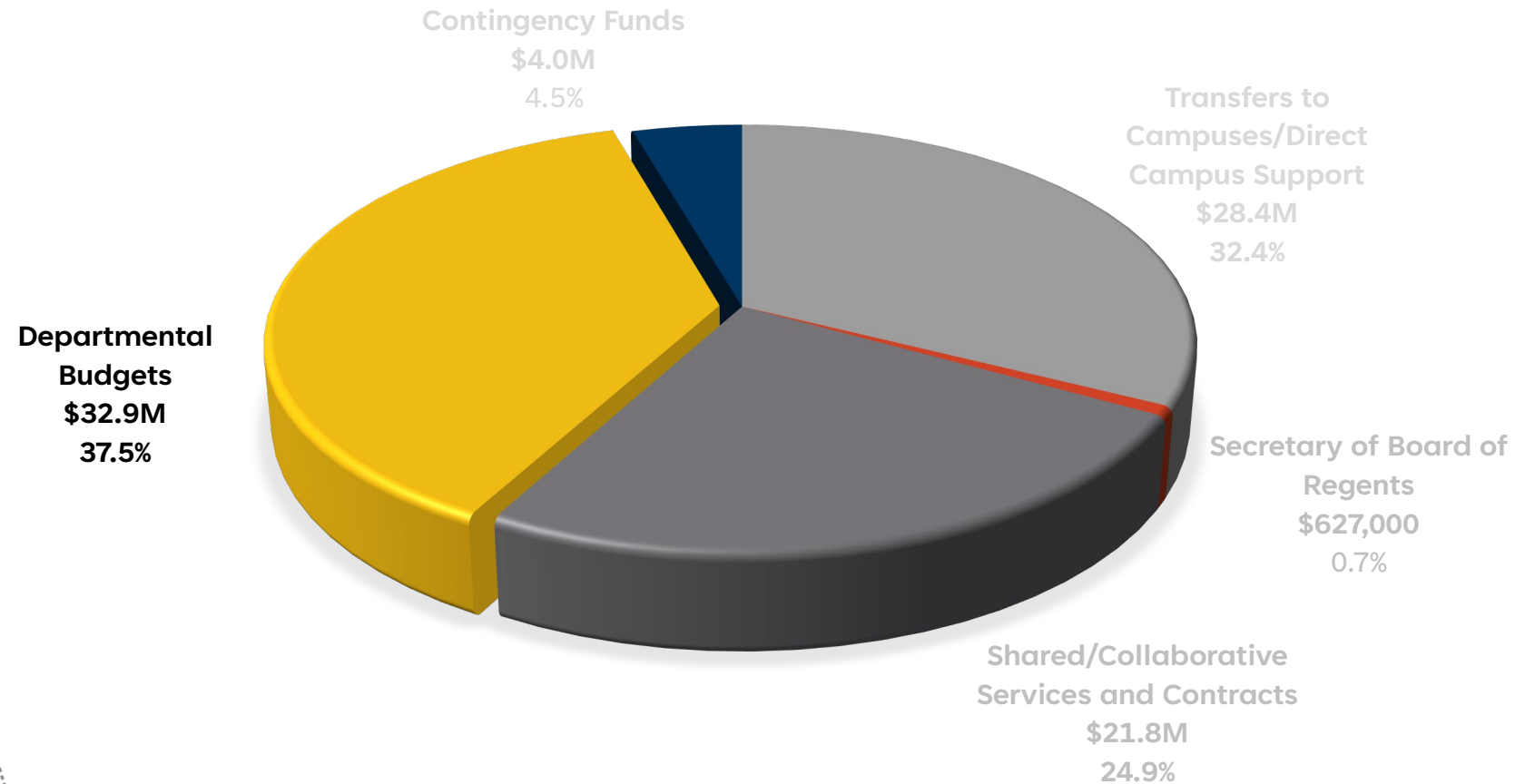
- Office of Online & Professional Learning Resources \$10M
- IT as a Service GPR Costs \$3.5M
- Shared Services GPR \$3.1M
- Institute for Business & Entrepreneurship \$1.8M
- Surveys and Memberships \$1.8M
- Support in Department Budgets \$1.5M
 - Real Estate Records Access & Construction Software
 - Administrative Law Judges
 - Tax Preparation Services
 - PCI Compliance
 - eApp Software



Shared/Collaborative Services & Contracts: \$21.8 Million (of \$87.6M total GPR)



FY25 GPR DEPARTMENT BUDGETS



Department Budgets: \$32.9 Million (of \$87.6M total GPR)



FY25 DEPARTMENT ACTIVITIES

- **Examples** of departmental services/activities replicated at campuses if not centrally provided:
 - Capital Planning – develop capital budget; evaluate projects including planners, architects & engineers; budget advocacy
 - IT – manage library resources (interlibrary loans, shared collections); investigate cyber security breaches; manage strategic IT procurements
 - Legal – review campus contracts; address personnel claims
 - Trust Funds – manage investments; distribute earnings

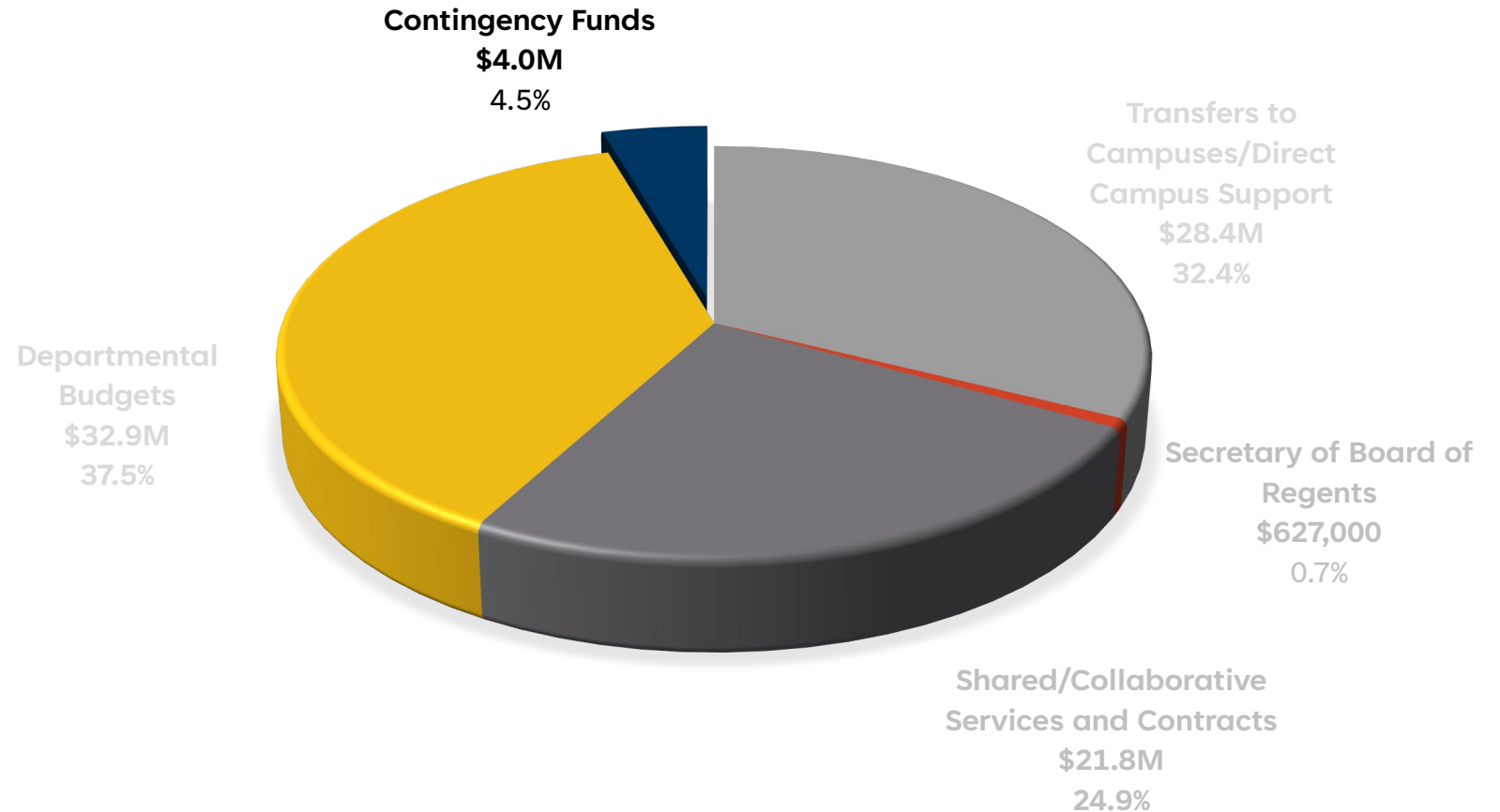
Department Budgets: \$32.9 Million (of \$87.6M total GPR)



FY25 GPR CONTINGENCY FUNDS

Support for Unforeseen Circumstances or Opportunities

- Examples include:
 - Crisis Call Center
 - Student Safety & Empowerment Training
 - Sustainability Project Positions
 - Title IX Advising Services
 - Outside Counsel or Investigators



Contingency Funds: \$4.0 Million (of \$87.6M total GPR)



QUESTIONS?